

**Shared Revenue Estimates: State Revenue Allocations to Cities and Counties**  
**Local Streets and Roads Estimates: 2025-26, 2026-27**  
**Including Highway Users Tax Account (HUTA) and**  
**Road Maintenance and Rehabilitation Account (RMRA)**

The state of California imposes per-gallon excise taxes on gasoline and diesel fuel, sales taxes on gasoline and diesel fuel and registration taxes on motor vehicles with allocations dedicated to transportation purposes.<sup>1</sup> The local (city and county) portions of these allocations flow through the Highway Users Tax Account (HUTA), the familiar gasoline tax revenues that have been in place for decades, and the Road Maintenance and Rehabilitation Account (RMRA) which allocates much of the revenue from the Road Repair and Accountability Act of 2017 (SB1 Beall).

State taxes transferred to and allocated through the state Highway Users Tax Account (HUTA) include:

- The per gallon “gasoline tax” and “diesel fuel tax” imposed on the use of vehicle fuels.
- The “use fuel tax,” imposed on vendors and users of motor vehicle fuels that are not taxed under either the gasoline or diesel fuel tax, such as liquefied petroleum gas, ethanol, methanol and natural gas (both liquid and gaseous) for use on state highways. Use Fuel Tax rates vary depending on the type of fuel.
- Variable rate per gallon gasoline diesel fuel excise taxes imposed in 2010-11 in a complicated arrangement known as the “fuel tax swap.” This rate replaced the previous Proposition 42 sales tax on gasoline.

Transportation taxes allocated to cities and counties through the Road Maintenance and Rehabilitation Account (RMRA) established by the Road Repair and Accountability Act of 2017 (SB1 Beall) include:

- An additional 12 cent per gallon increase to the gasoline excise tax effective November 1, 2017 with annual inflation adjustments beginning July 1, 2020.
- An additional 20 cent per gallon increase to the diesel fuel excise tax effective November 1, 2017 with half of the revenues going to the state Trade Corridor Enhancement Account (TCEA) and half to the RMRA. Annual inflation adjustments beginning July 1, 2020.
- An additional vehicle registration tax called the “Transportation Improvement Fee” with rates based on the value of the motor vehicle effective January 1, 2018 with annual inflation adjustments beginning July 1, 2020.
- An additional \$100 vehicle registration tax on zero emissions vehicles of model year 2020 or later effective July 1, 2020 with annual inflation adjustments beginning July 1, 2021.

The Road Repair and Accountability Act of 2017 (SB1 Beall) also adopted annual inflationary adjustments beginning July 1, 2020 to all per-gallon motor vehicle fuel excise taxes including the rates allocated through the Highway Users Tax Account (HUTA).

<sup>1</sup> Taxes on aircraft jet fuel are transferred to the state Aeronautics Account.

## Highway Users Tax Account (HUTA)

### Revenue Allocations – Streets & Highways Code Sec 2103-2108 “HUTA”

Cities and counties receive revenue from the motor vehicle fuel taxes imposed pursuant to Revenue and Taxation Code Section 7360(a) and (b) through the Highway User Tax Account under the following formulas outlined in the Streets and Highways code and illustrated in Figure 1.

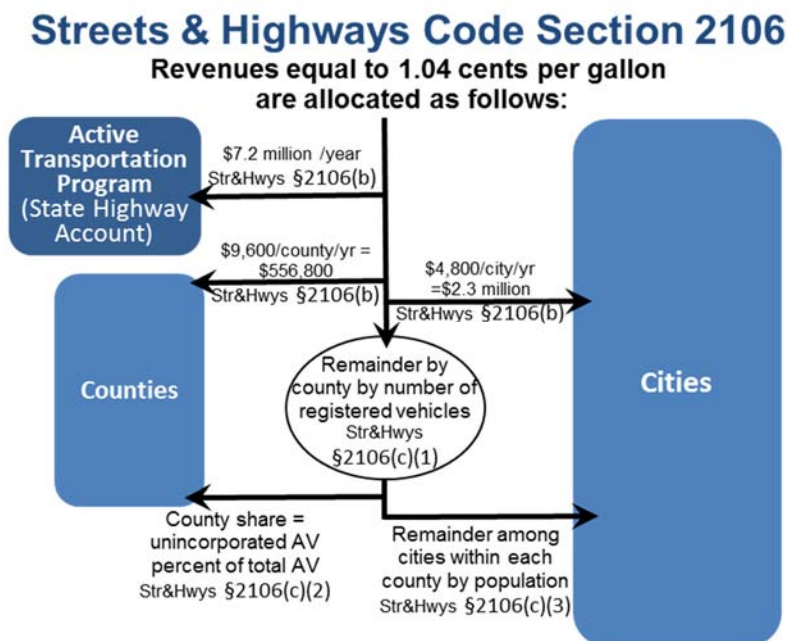
**Section 2104.** Section 2104 allocates funds to counties with designated allotments for engineering and administration, snow removal, heavy rainfall / storm damage as well as county streets, roads and public mass transit guideways and facilities.

**Section 2105.** Section 2105(a) allocates 11.5 percent of the tax revenues in excess of 9 cents per gallon (i.e. the Proposition 111 rate) monthly among counties based on population.

Section 2105(b) allocates 11.5 percent of the tax revenues in excess of 9 cents per gallon (i.e. the Proposition 111 rate) monthly among cities based on population.

**Section 2106.** Revenues equal to 1.04 cents per gallon are allocated as follows:

- \$7.2 million per year to the State Bicycle Transportation Account.
- \$400 per month to each city (\$2,313,600 per year among the 482 eligible cities<sup>2</sup>)
- \$800 per month to each county (\$556,800 per year among the 58 counties)
- The residual amount to each county and the cities in that county based on registered vehicles. In each county, from this amount, the county receives an allotment based on the share of assessed value of the county which is in the unincorporated area. The remainder is allocated to the cities within the county based on population.



<sup>2</sup> The city of Rolling Hills has only private streets and is therefore not eligible to receive these allocations.

**Section 2107.** This section provides monthly allocations to cities of 1.315 cents per gallon of gasoline, 1.8 cents per gallon of diesel, and 2.59 cents per liquefied petroleum gas (LPG), as follows.

- a. Each city with snow removal costs in excess of \$5,000 is allocated 50 percent of the cost exceeding \$5,000.
- b. The remainder is allocated to cities based on population.

**Section 2107.5.** These funds (about \$2.7 million per year) are allocated to cities annually in July based on population as follows:

<b>Streets &amp; Highway Code §2107.5</b>	
<b>City Population</b>	<b>Annual Allocation</b>
over 500,000	\$ 20,000
100,000 to 500,000	\$ 10,000
50,000 to 99,999	\$ 7,500
25,000 to 49,999	\$ 6,000
20,000 to 24,999	\$ 5,000
15,000 to 19,999	\$ 4,000
10,000 to 14,999	\$ 3,000
5,000 to 9,999	\$ 2,000
less than 5,000	\$ 1,000

Section 2107.5 funds must be used for engineering costs and administrative expenses related to city streets. Cities with populations under 10,000 may also expend the moneys for street construction or acquisition of street rights-of-way.

## **Section 2103 HUTA and the 2010 Gasoline Sales Tax – Excise Tax Swap**

In March 2010 as a part of a special budget session called by Governor Schwarzenegger, the Legislature enacted a swap of state sales taxes on gasoline for a gasoline excise tax. Intended to be “revenue neutral,” the fuel tax swap provided the Legislature with greater flexibility in the use of funds, in particular relieving the general fund from the cost of state transportation debt service payments. The fuel tax swap:

1. Repealed the state sales tax on gasoline (local rates including the Bradley Burns are NOT affected);
2. Increased the excise tax on gasoline by 17.322 cents and added an annual adjustment mechanism intended to ensure the new excise tax provides, over time, the same amount of revenues expected from the sales tax on gas (no more, no less);
3. Increased the sales tax on diesel by 1.75 percent and allocated 75 percent to local transit agencies and 25 percent to state transit programs. The excise tax on diesel was reduced from 18 cents to 13.6 cents. Sales tax revenues from diesel must go to transit funding.
4. Provided for a specific allocation of the funds among state and local transportation needs.

Revenues from the new Section 2103 excise tax rate are now allocated as follows:

1. State transportation debt service;
2. Remainder allocated:
  - a. 44 percent to the State Transportation Improvement Program (STIP);
  - b. 12 percent State Highway Operation and Protection Program (SHOPP);
  - c. 44 percent evenly split between cities and counties using current HUTA formulas.

Section 2103 funds are allocated to cities on a per capita basis and to counties 75 percent based on the proportion of registered vehicles and 25 percent based on the proportion of maintained county road miles.

The law included expressed legislative intent to fully replace the local streets and road funds cities and counties would have received under Proposition 42 state sales tax on gasoline with allocations from the new higher motor vehicle excise tax (HUTA) rate.

However, the swap created certain revenue effects related to the timing and receipt of revenues. In particular, the law provided that the new excise tax rate be adjusted annually by the BOE to garner an amount of revenues equal to what Prop42 would have provided in the prior year. Thus, the annual Sec 2103 funds were always “looking backward.” If the Section 2103 amounts generated less than Prop42 would have, the difference was made up until the following year.

In the years following the swap, there were a number of snafus and changes in interpretation of the Section 2103 allocation. In FY2011-12 SCO allocated more money to cities and counties and did not fully backfill state transportation programs for weight fees that were used for debt service and loans that those funds would have otherwise received. This was contrary to the Legislature’s intention, but the statute was not clear. The statute was clarified in the 2013 budget to clarify the original intent of the weight fee swap to fully backfill state transportation funds. [Streets & Highways Code 2103 (a)(1)(D)].

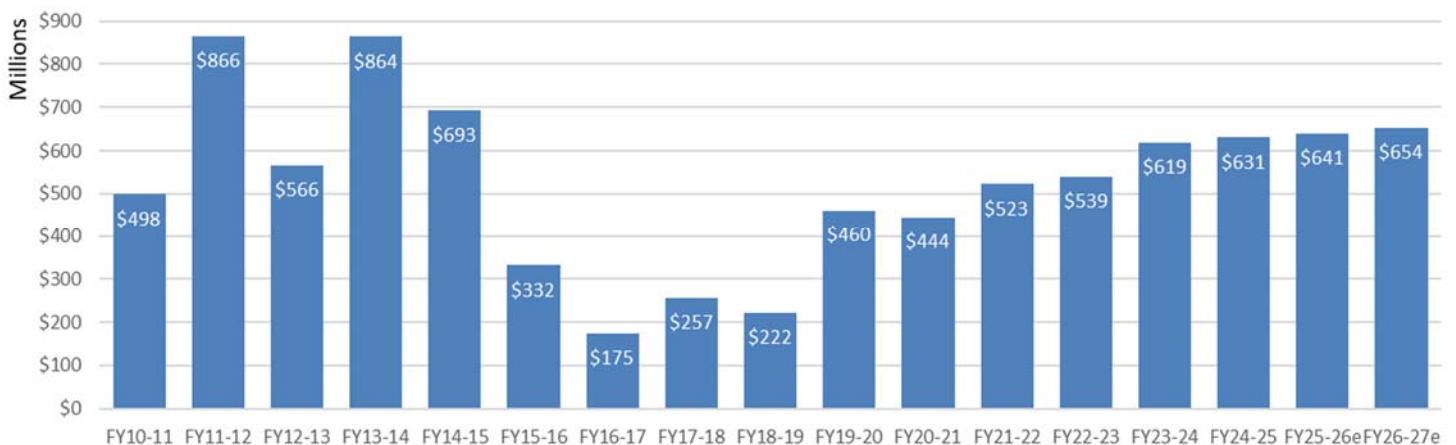
### Changes to HUTA Allocated Rates, Including the Variable Rate by the Road Repair and Accountability Act of 2017 (SB1 Beall)

In addition to increasing various fuel and motor vehicle registration taxes, the Road Repair and Accountability Act of 2017 (SB1 Beall) removed BOE’s discretionary rate setting role over the Section 2103 variable rate and reset the variable rate at 17.3 cents per gallon on July 1, 2019, up from the current 11.7 cents. This adjustment more than doubled Section 2103 revenue allocations for FY2019-20 over the prior year.

With regard to diesel fuel taxes, SB1 also eliminated the price-based adjustment mechanism applied to the diesel fuel tax rate.

Since 2020, gasoline and diesel fuel excise tax rates are increased on July 1 by the change in the California Consumer Price Index from the prior year. These include the 18 cent per gallon base rate, the 17.3 percent per gallon rate, the diesel fuel excise tax rate and vehicle registration taxes.

#### Streets & Highways Code Section 2103 Variable Gas Tax Allocations to Cities and Counties



<b>California Gasoline Excise Tax Rates - Per Gallon</b>				
<b>Effective Date</b>	<b>Base Rate</b>	<b>Sec2103</b>	<b>SB1 Rate</b>	<b>Total</b>
July 1, 2015	\$ 0.180	\$ 0.120		\$ 0.300
July 1, 2016	\$ 0.180	\$ 0.098		\$ 0.278
July 1, 2017	\$ 0.180	\$ 0.117		\$ 0.297
Nov 1, 2017*	\$ 0.180	\$ 0.117	\$ 0.120	\$ 0.417
July 1, 2019	\$ 0.180	\$ 0.173	\$ 0.120	\$ 0.473
July 1, 2020	\$ 0.192	\$ 0.185	\$ 0.128	\$ 0.505
July 1, 2021	\$ 0.194	\$ 0.187	\$ 0.130	\$ 0.511
July 1, 2022	\$ 0.205	\$ 0.197	\$ 0.137	\$ 0.539
July 1, 2023	\$ 0.220	\$ 0.212	\$ 0.147	\$ 0.579
July 1, 2024	\$ 0.227	\$ 0.218	\$ 0.151	\$ 0.596
July 1, 2025	\$ 0.233	\$ 0.224	\$ 0.155	\$ 0.612
July 1, 2026e	\$ 0.241	\$ 0.232	\$ 0.161	\$ 0.634

<b>California Diesel Excise Tax Rates</b>			
<b>Effective Date</b>	<b>Base Rate</b>	<b>SB1 Rate</b>	<b>Total</b>
July 1, 2017	\$ 0.160		\$ 0.160
Nov 1, 2017*	\$ 0.160	\$ 0.200	\$ 0.360
July 1, 2019	\$ 0.160	\$ 0.200	\$ 0.360
July 1, 2020	\$ 0.171	\$ 0.214	\$ 0.385
July 1, 2021	\$ 0.173	\$ 0.216	\$ 0.389
July 1, 2022	\$ 0.182	\$ 0.228	\$ 0.410
July 1, 2023	\$ 0.196	\$ 0.245	\$ 0.441
July 1, 2024	\$ 0.202	\$ 0.252	\$ 0.454
July 1, 2025	\$ 0.207	\$ 0.259	\$ 0.466
July 1, 2026e	\$ 0.214	\$ 0.268	\$ 0.482

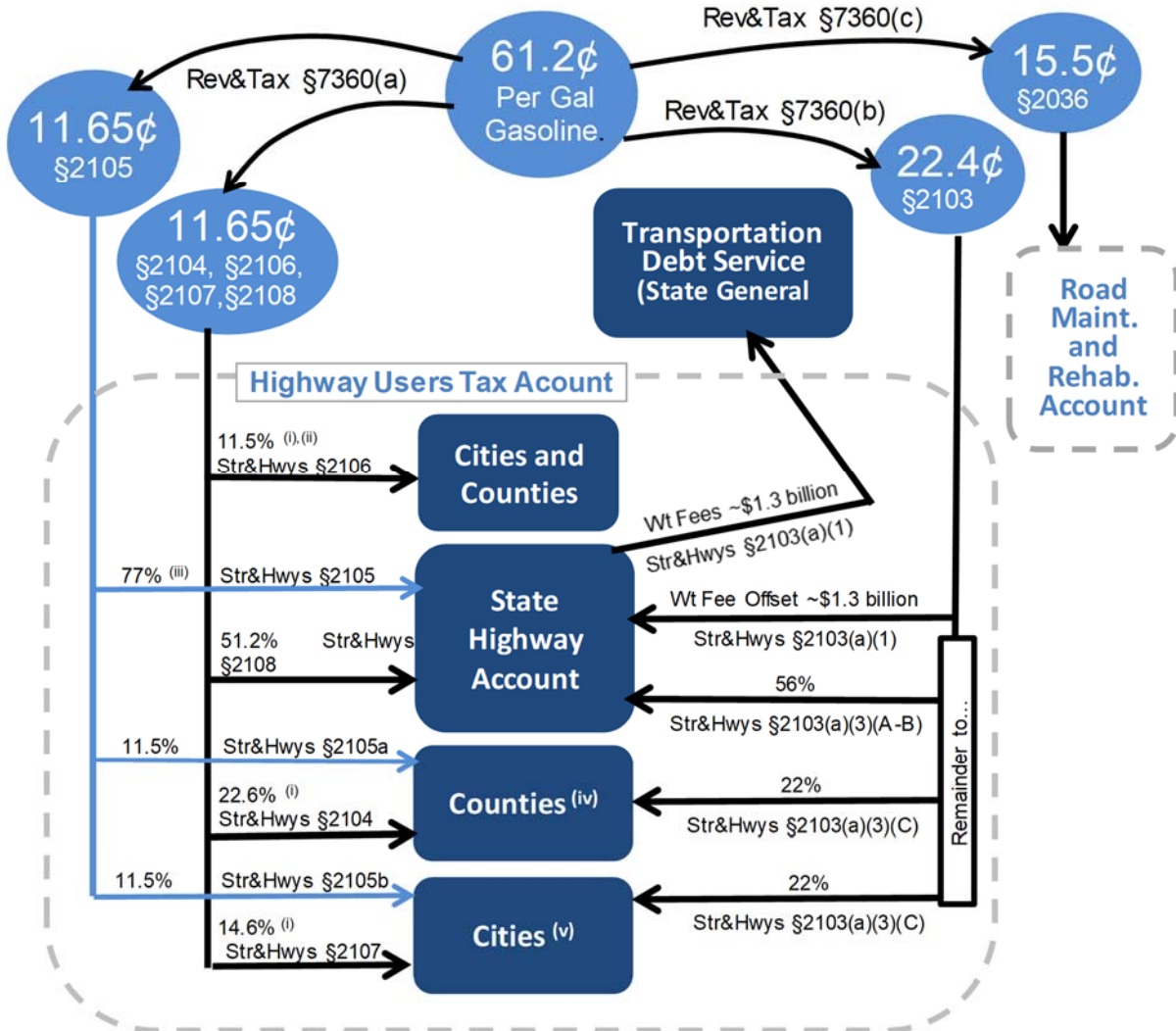
## Use of Funds: HUTA

The use of local Motor Vehicle Fuel Tax funds is restricted by Article XIX of the California State Constitution and by Streets and Highways Code Section 2101. All Motor Vehicle Fuel Tax funds allocated from the Highway Users Tax Account must be expended for the following:

- (a) The research, planning, construction, improvement, maintenance, and operation of public streets and highways (and their related public facilities for nonmotorized traffic), including the mitigation of their environmental effects, the payment for property taken or damaged for such purposes, and the administrative costs necessarily incurred in the foregoing purposes.
- (b) The research and planning for exclusive public mass transit guideways (and their related fixed facilities), the payment for property taken or damaged for such purposes, and the administrative costs necessarily incurred in the foregoing purposes.
- (c) The construction and improvement of exclusive public mass transit guideways (and their related fixed facilities), including the mitigation of their environmental effects, the payment for property taken or damaged for such purposes, the administrative costs necessarily incurred in the foregoing purposes, and the maintenance of the structures and the immediate right-of-way for the public mass transit guideways.
- (d) The payment of principal and interest on voter-approved bonds issued for the purposes specified above.

# Allocation of Gasoline Excise Tax Revenues

rates effective July 1, 2025



- (i) The 4.39¢ local share of diesel fuel tax is allocated 1.8¢ to counties and 2.59¢ to cities.
- (ii) Str&Hwy Code §2106 funds are distributed based on registered vehicles, assessed property valuation, and population.
- (iii) A portion of funds in State Highway Account is allocated among counties and cities for Regional Transportation Improvement Programs.
- (iv) County apportionments are based on numbers of registered vehicles and county road mileage.
- (v) City apportionments are based on population.
- (vi) Beginning July 1, 2020 and annually thereafter, these rates are subject to an annual cost-of-living adjustment.

## Three Year State General Fund TCRF Loan Repayment Funds

SB1 stipulated the repayment of \$706 million by the state General Fund to transportation funds over three fiscal years: 2017-18, 2018-19, and 2019-20. Under SB1, \$75 million was allocated to local streets and roads from repayments of Transportation Congestion Relief Funds (TCRF) in each of these three years. These funds were allocated half to cities and half to counties with the city funds allocated among cities on a per capita basis, the county funds allocated among counties based on numbers of registered vehicles and county road mileage.

These TCRF revenues may be deposited in local HUTA funds.<sup>3</sup> However, these TCRF funds carried slightly different use requirements than HUTA funds. TCRF funds could be expended only for street and highway maintenance, rehabilitation, reconstruction or storm damage repair. For these purposes,

- “Maintenance” means patching and/or overlay and sealing.
- “Reconstruction” includes any overlay, sealing or widening of the roadway, if the widening is necessary to bring the roadway width to the state minimum standards, but does not include widening for the purpose of traffic capacity.
- “Storm damage repair” is repair or reconstruction of local streets and highways and related drainage improvements that have been damaged due to winter storms and flooding, and construction of drainage improvements to mitigate future roadway flooding and damage problems, in those jurisdictions that have been declared disaster areas by the President of the United States.

## Road Maintenance and Rehabilitation Account (RMRA)

### Revenue Allocations – Streets & Highways Code Sec 2031 “RMRA”

The Road Repair and Accountability Act of 2017 (SB1 Beall) represented a significant additional investment in California’s transportation systems of over \$5 billion per year. The Act increased per gallon fuel excise taxes, diesel fuel sales taxes and vehicle registration taxes, stabilized the problematic price-based fuel tax rates and provided for inflationary adjustments to rates in future years. The Act is more than doubling local streets and road funds allocated through the Highway Users Tax Account (HUTA) and through the Road Maintenance and Rehabilitation Account (RMRA) which it established.

The RMRA receives funds<sup>4</sup> from the following new taxes imposed under the Road Repair and Accountability Act of 2017:

- A 12 cent per gallon increase to the gasoline excise tax effective November 1, 2017.
- A 20 cent per gallon increase to the diesel fuel excise tax effective November 1, 2017, half of which will be allocated to Trade Corridors Enhancement Account (TCEA) with the remaining half to the RMRA.
- A new vehicle registration tax called the “transportation improvement fee,” effective January 1, 2018, based on the market value of the vehicle.
- An additional new \$100 vehicle registration tax on zero emission vehicles model year 2020 and later effective July 1, 2020.

<sup>3</sup> Note that the “loan repayment” is between the state general fund and state transportation funds. From an accounting standpoint this is NOT a debt repayment to local agencies, it is simply revenue.

<sup>4</sup> In addition, funds from a 4 percent increase in the diesel sales tax to 5.75 percent from the prior 1.75 percent effective November 1, 2017 are allocated to the Public Transportation Account.

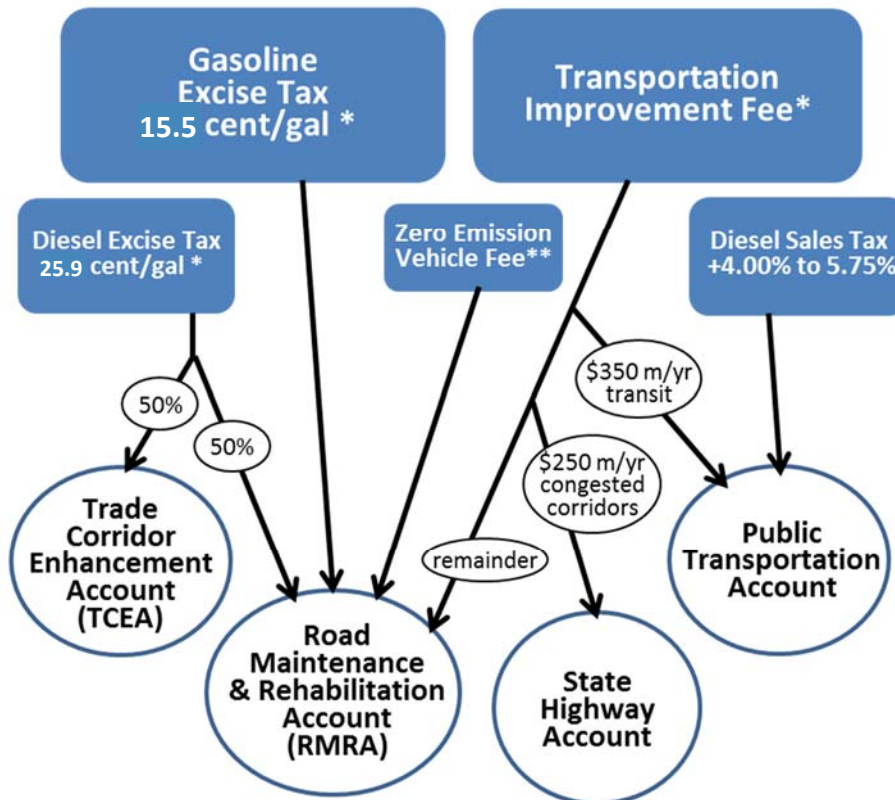
- Annual rate increases to these taxes every July 1 (January 1 for the registration fees) for the change in the California Consumer Price Index. The first adjustment made on July 1, 2020 covered CPI change for two years: November 1, 2017 through November 12, 2019.

<b>SB1 Transportation Improvement Fee</b>								
Vehicle Value	Jan 2018	Jan 2020	Jan 2021	Jan 2022	Jan 2023	Jan 2024	Jan 2025	Jan 2026
0 - \$4,999	\$ 25	\$ 27	\$ 27	\$ 28	\$ 29	\$ 32	\$ 32	\$ 33
\$5,000 - \$24,999	\$ 52	\$ 54	\$ 55	\$ 56	\$ 59	\$ 65	\$ 65	\$ 66
\$25,000 - \$34,999	\$ 105	\$ 107	\$ 110	\$ 112	\$ 118	\$ 129	\$ 129	\$ 132
\$35,000 - \$59,999	\$ 157	\$ 161	\$ 165	\$ 168	\$ 177	\$ 194	\$ 194	\$ 198
\$60,000 & over	\$ 183	\$ 188	\$ 192	\$ 196	\$ 206	\$ 227	\$ 227	\$ 231

<b>SB1 Road Improvement Fee (RIF)</b>								
	Jan 2020	Jan 2021	Jan 2022	Jan 2023	Jan 2024	Jan 2025	Jan 2026	
ZEV vehicle*	\$ 100	\$ 101	\$ 103	\$ 108	\$ 118	\$ 118	\$ 121	

\*Zero Emission Vehicles, 2020 or later models.

### Road Maintenance and Rehabilitation Account Revenues



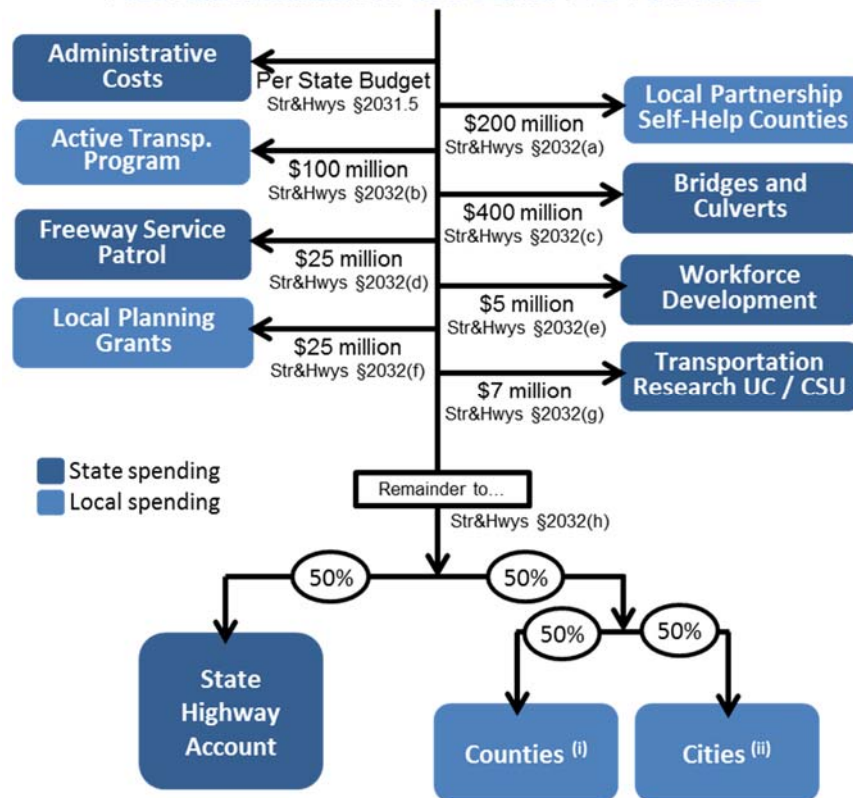
\* adjusted for inflation annually beginning 7/1/2020

\*\* effective 7/1/2020 adjusted for inflation annually beginning 7/1/2021

The Road Repair and Accountability Act directs the State Controller to allocate, on a monthly basis, fifty percent of the revenues in the RMRA to the State Highway Operation and Protection Program (SHOP) in the State Highway Account and half to cities and counties. But there are a series of specific program allocations, subject to appropriation in the annual state budget, to be taken out first:

1. Administrative costs.
2. \$200 million for the State-Local-Partnership Program for existing and aspiring self-help jurisdictions.
3. \$100 million annually for the Active Transportation Program for the purpose of encouraging increased use of active modes of transportation, such as biking and walking.
4. \$400 million for state bridge and culvert maintenance and rehabilitation.
5. \$25 million for the state’s Freeway Service Patrol program.
6. \$5 million for five years through FY 2021-22 for pre-apprenticeship training programs of the California Workforce Development Board.
7. \$25 million for local planning grants to encourage local and regional planning.
8. \$7 million for transportation research and transportation-related workforce education, training, and development including \$5 million to the University of California and \$2 million to the California State University.

### Allocation of Road Maintenance and Rehabilitation Account Revenues



(i) County apportionments are based on numbers of registered vehicles and county road mileage.  
 (ii) City apportionments are based on population.

### **Use of Funds: RMRA** [Streets and Highways Code Section 2030]

The use of RMRA local streets and roads funds is similar but, not identical, to HUTA use rules. Pursuant to Streets and Highways Code Section 2030, RMRA local streets and roads allocations must be used for projects “that include, but are not limited to,” the following

- Road maintenance and rehabilitation
- Safety projects
- Railroad grade separations
- Traffic control devices
- Complete street components, “including active transportation purposes, pedestrian and bicycle safety projects, transit facilities, and drainage and storm-water capture projects in conjunction with any other allowable project.”

RMRA funds may also be used to satisfy a match requirement for projects eligible for state or federal funds.

SB1 also contains non-obligatory intent language regarding the use of funds. “To the extent possible and cost effective,” cities and counties are to use a use:

- advanced recycling techniques that reduce greenhouse gas emissions;
- automotive technologies, ZEV fueling, infrastructure-to-vehicle;
- communications autonomous vehicle systems;
- resiliency re climate change, fires, floods, sea level rise; and
- complete street elements, access for bicycles, pedestrians.

If a city or county has an average Pavement Condition Index that meets or exceeds 80, the city or county may spend its RMRA funds on transportation priorities other than these. [Streets and Highways Code Sec 2037]

### **Maintenance of Effort: RMRA** [Streets and Highways Code Sec 2036]

The Road Repair and Accountability Act contains a local agency maintenance of effort (MOE) requirement that applies to funds allocated through the RMRA. The Act states that the MOE requirement is to ensure that these new roads funds do not supplant existing levels of city and county general revenue spending on streets and roads. The MOE for the receipt of RMRA funds state that a city or county must maintain general fund spending for street, road, and highway purposes at no less than average of 2009–10, 2010–11, and 2011–12 years. In making this calculation an agency may exclude one-time funds. A city or county that fails to comply in a particular year may make it up with in additional expenditures in the following year.

The Act provides that the State Controller may perform audits to ensure compliance with these MOE rules. If the State Controller determines that a city or county has not met its MOE, the agency will be required to reimburse the state for the funds it received during that fiscal year. However, a city or county that fails to comply in a particular fiscal year may expend during that fiscal year and the following fiscal year a total amount that is sufficient to comply. Any funds withheld or returned as a result of a failure to comply will be reapportioned to the other counties and cities whose expenditures are in compliance.

For further guidance, see the State Controller’s “*Guidelines Relating to Gas Tax Expenditures for Cities and Counties.*”

## Spending Plans and Reports: RMRA [Streets and Highways Code Sec 2034]

The Road Repair and Accountability Act stipulates that, prior to receiving RMRA funds in a fiscal year, a city or county must submit to the California Transportation Commission (CTC) a project list pursuant to an adopted budget. The list must include for each project: description, location, schedule, useful life. [Streets and Highways Code Sec 2034(a)]

The Road Repair and Accountability Act also requires that a city or county submit to the CTC an annual report of project completion in order to receive RMRA funds. The report must include descriptions of all projects for which RMRA funds were expended including: description, location, funds expended, completion date, estimated useful life of the project.

## Budgeting and Accounting for RMRA Funds: The ~60 Day Delay

The allocation of Road Maintenance and Rehabilitation Account (RMRA) revenues to cities and counties takes many weeks. It takes the State Controller's Office roughly 30 to 60 days from the time of revenue collection by the state, through the various statutory set asides to distribute the funds to cities and counties in monthly allocations. Consequently, the estimates shown in this report are for revenues collected for July through June are not received on a cash basis by local agencies until September through August. That is, for example, the FY2022-23 figure for your agency is revenues collected in and for July 2022 through June 2023 but distributed in monthly allocations September 2022 through August 2023. Cities and counties thus have two choices in the budgeting and accounting of RMRA revenues:

- 1) apply a 60 day accrual policy to RMRA funds (*recommended*); or
- 2) adjust RMRA budgets (especially in FY2017-18) to reflect a distributed cash basis.

## Local Streets and Roads (HUTA and RMRA) Revenue Estimates for FY2025-26 and FY2026-27

We have computed revenue estimates for each city and county using a model reflecting the local allocation formulas, latest population figures used by the State Controller for allocations and estimates by the state Department of Finance (DOF) of statewide HUTA and RMRA tax revenues provided with the ***Governor's Proposed 2026-27 Budget (released January 10, 2025)*** and analyses of SB1(Beall), The Road Repair and Accountability Act of 2017. Compared to their May 2025 projections for 2025-26, DOF statewide revenue estimates show a slight (1.6 percent) downward revision in their RMRA estimate and a slight (1.8 percent) upward revision in HUTA estimate for a very slight 0.2 percent overall higher LSR estimate for this year.

Fuel consumption was sharply down during the height of the COVID-19 pandemic but has largely recovered to its prior, slightly declining trajectory. Recently, fuel prices have increased steeply but the price of fuel no longer has a direct effect on local streets and roads revenues because all rates are per gallon, regardless of price.

Despite lower fuel consumption, scheduled rate increases stipulated in SB1 have kept local allocations of revenue growing at a modest pace but this growth is expected to flatten in a few years. Gas tax revenue collections are forecast to increase 2 percent in 2025-26 and again in 2026-27 but to zero growth by FY 2030-31.

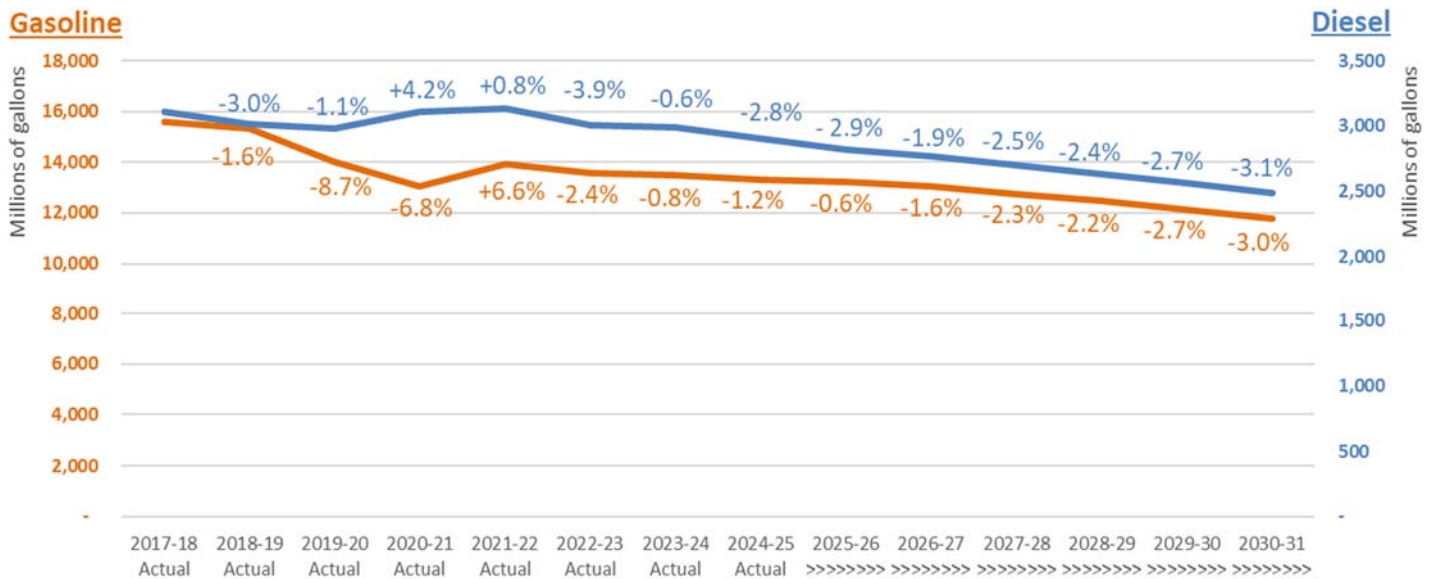
On the other hand, vehicle registration tax revenues from the SB1 vehicle registration tax ("Transportation Improvement Fee") and the zero emission vehicle registration tax ("Road Improvement Fee") are forecast to increase by about 6 percent in 2025-26 and again in 2026-27 and sustain this pace of growth over the five year forecast period.

Total LSR allocations (including HUTA, TCRF, and RMRA) were up 8.1 percent in 2024-25 from the prior year. But as fuel consumption gradually declines, revenue growth will soften. The Department of Finance projects total LSR allocations to cities and counties in 2025-26 will increase by just 1.9 percent. For the budget year FY2026-27, DOF estimates total statewide local streets and roads allocations will grow by 6.0 percent.

**HUTA (Highway Users Tax Account)**

HUTA revenues are allocated to cities and counties pursuant to Sections 2103-2107 of the Streets and Highways Code. The per gallon excise tax rates that provide HUTA revenues are adjusted annually on July 1 as described above. Revenue changes depend on the combined effects of 1) these rate adjustments, 2) taxable gallonage, and 3) the relative change of statutory transfers including the “weight fee offset” that pays state transportation bond debt.

Sec2103-2108 HUTA allocations (not including RMRA) grew 2.6 percent in FY2024-25. But HUTA revenue growth is now flattening and will continue to decline. DOF estimates 1.4 percent HUTA growth in current year FY2025-26, leveling off to 1.8 percent growth in budget year FY2026-27.



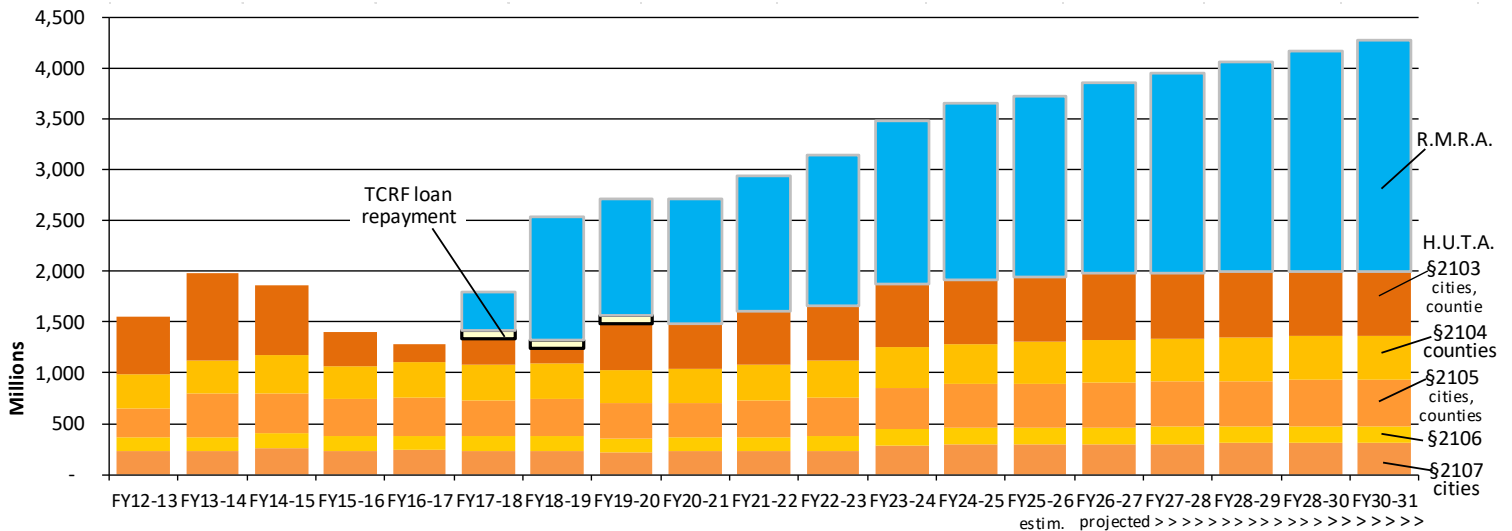
**RMRA (Road Maintenance and Rehabilitation Account)**<sup>5</sup>

The Road Repair and Accountability Act (SB1) taxes that provide funding to cities and counties through the RMRA began on November 1, 2017 when the new per-gallon fuel excise taxes took effect. It also includes allocations from the SB1 vehicle registration tax (“Transportation Improvement Fee”) and the zero emission vehicle registration tax (“Road Improvement Fee”) which are expected to grow more robustly and are not included in the HUTA allocations. Additionally, various fixed-amount statutory allocations are made from the SB1 tax rates prior to the city and county allocations.

<sup>5</sup> Note that RMRA revenues are delayed 60 days from collection to allocation. That is, the revenues for a July 1 to June 30 fiscal year are allocated September 1 through August 31. These are spendable in the fiscal year because your accounting staff “accrues” them back into your fiscal year.

Because of this, city and county RMRA revenues are expected to grow more robustly. DOF estimates 2025-26 revenue will be 1.9 percent higher than 2024-25 actuals and that 2026-27 revenues will grow by 6.0 percent over the current year.

### California Local Streets and Roads Program - State Funds to Cities and Counties



### Looking Ahead: Long Term Estimates of Local Streets and Roads Funding

Since the recovery following the COVID-19 pandemic of 2020, we have seen modest year over year growth in local streets and roads revenues. In future years, as alternative fuel vehicles come more into use, fuel consumption will continue to decline. The SB1 annual cost of living adjustments will help to maintain revenues but we will see decline in revenue growth to below the rate of inflation.

Due to complicated statutory transfers from these revenues before the city and county allocations are made (including the \$1.35 billion transfer for state transportation debt service), actual growth in funding allocated to cities and counties varies somewhat among the various categories of local streets and roads allocations and will not exactly mirror total tax collections. Taking all these factors into account, for the purposes of long-term transportation program planning, we estimate transportation allocations to cities and counties will increase in outyears at the following growth rates:

	<u>2025-26</u>	<u>2026-27</u>	<u>2027-28</u>	<u>2028-29</u>	<u>2029-30</u>	<u>2030-31</u>
HUTA 2103	1.6%	2.0%	-0.9%	-0.2%	-1.6%	-1.2%
HUTA 2104	3.5%	1.7%	1.0%	1.0%	0.5%	0.1%
HUTA 2105	0.8%	1.7%	1.0%	1.0%	0.5%	0.1%
HUTA 2106	1.4%	1.7%	1.0%	1.0%	0.5%	0.1%
HUTA 2107	-1.1%	1.7%	1.0%	1.0%	0.5%	0.1%
RMRA	1.9%	6.0%	4.7%	4.9%	5.3%	5.2%

**Your Mileage Revenues May Vary**

Long-term, in addition to the growth in statewide local streets and roads revenue collections, the allocations to each particular city will be primarily related to changes in the city’s population relative to the change in state population in cities. The current forecast for California population, provided by the Demographics Unit of the California Department of Finance is as follows:<sup>6</sup>

California	<u>2022</u>	<u>2023</u>	<u>2024</u>	<u>2025</u>	<u>2026</u>	<u>2027</u>	<u>2028</u>	<u>2029</u>	<u>2030</u>	<u>2031</u>
Population	39,185,605	38,990,487	38,991,721	39,024,054	39,068,081	39,131,779	39,213,804	39,323,647	39,430,871	39,532,028
..... in Cities	32,713,003	33,118,970	33,120,018	33,182,482	33,219,919	33,274,082	33,343,828	33,437,229	33,528,402	33,614,417
percent change		1.24%	0.00%	0.19%	0.11%	0.16%	0.21%	0.28%	0.27%	0.26%

	<u>2032</u>	<u>2033</u>	<u>2034</u>	<u>2035</u>	<u>2036</u>	<u>2037</u>	<u>2038</u>	<u>2039</u>	<u>2040</u>
Population	39,626,155	39,719,558	39,800,683	39,872,787	39,936,372	39,991,277	40,037,385	40,076,005	40,106,449
Population in Cities	33,694,454	33,773,875	33,842,856	33,904,167	33,958,234	34,004,920	34,044,126	34,076,965	34,102,852
percent change	0.24%	0.24%	0.20%	0.18%	0.16%	0.14%	0.12%	0.10%	0.08%

If you think your city’s population growth will be significantly different from the statewide average in cities, then you should adjust accordingly. For example, the City of Buena Vista’s planning department estimates the city will see average annual residential population growth of 1.5 percent annually over the next ten years. The city’s estimated HUTA 2105 allocation for FY2026-27 is \$381,200. The long term projection of Section 2105 revenue would be:

$$\$381,200 \times \text{Sec2105 growth} \times \text{Buena Vista Population Growth} \div \text{Statewide City Population Growth}$$

$$\text{So, for 2027-28, the city would estimate } \$381,200 \times 1.01 \times 1.015 \div 1.0016 = \$390,185$$

And long term ...

City of Buena Vista EXAMPLE		<u>2026-27</u>	<u>2027-28</u>	<u>2028-29</u>	<u>2029-30</u>	<u>2030-31</u>	<u>2031-32</u>	<u>2032-33</u>				
HUTA Sec2015	\$	381,200										
2105 growth			1.0%	1.0%	0.5%	0.1%	0.0%	0.0%				
Buena Vista pop			1.5%	1.5%	1.5%	1.5%	1.5%	1.5%				
Cities pop			0.16%	0.21%	0.28%	0.27%	0.26%	0.24%				
HUTA Sec2015	\$	390,185	\$	399,277	\$	406,122	\$	411,349	\$	416,436	\$	421,671

Changes for in allocations to an individual county will be affected by many things including: the population of the county relative to the total population of the state, proportion of population in the unincorporated area of the county, as well as relative numbers of vehicle registrations, assessed values and maintained road miles.

**Next Update**

The next update to these revenue estimates will be in May 2026.

mjgc

<sup>6</sup> See <http://www.dof.ca.gov/Forecasting/Demographics/projections/> California population in cities estimated by author based on recent historic trend of proportion of population in cities.

## ATTACHMENTS:

- A) Local Streets and Roads - Projected Individual City Revenues – FY2025-26
- B) Local Streets and Roads - Projected Individual City Revenues – FY2026-27
- C) Local Streets and Roads - Projected Individual County Revenues – FY2025-26 (from CSAC)
- D) Local Streets and Roads - Projected Individual County Revenues – FY2026-27 (from CSAC)

ATTACHMENT A

## Local Streets and Roads - Projected FY2025-26 Revenues

Based on State Dept of Finance statewide revenue projections

Estimated January 2026

	Highway Users Tax Acct (HUTA) <sup>(1)</sup> Streets & Highways Code					TOTAL HUTA	Road Mntnc Rehab Acct	TOTAL
	Sec2103 <sup>(3)</sup>	Sec2105 <sup>(3)</sup>	Sec2106 <sup>(3)</sup>	Sec2107 <sup>(3)</sup>	Sec2107.5 <sup>(4)</sup>			
<b>ALAMEDA COUNTY</b>								
ALAMEDA	757,271	507,732	286,688	678,585	7,500	2,237,775	2,091,323	4,329,098
ALBANY	202,888	136,031	80,323	181,806	5,000	606,048	560,306	1,166,355
BERKELEY	1,229,995	824,682	462,656	1,102,189	10,000	3,629,522	3,396,825	7,026,347
DUBLIN	715,785	479,917	271,245	641,409	7,500	2,115,856	1,976,753	4,092,609
EMERYVILLE	129,096	86,556	52,855	115,682	3,000	387,190	356,520	743,710
FREMONT	2,229,253	1,494,661	834,622	1,997,616	10,000	6,566,152	6,156,435	12,722,587
HAYWARD	1,571,936	1,053,945	589,941	1,408,600	10,000	4,634,421	4,341,149	8,975,571
LIVERMORE	841,057	563,909	317,877	753,665	7,500	2,484,008	2,322,713	4,806,721
NEWARK	468,488	314,110	179,191	419,809	6,000	1,387,598	1,293,804	2,681,402
OAKLAND	4,150,979	2,783,131	1,549,969	3,719,660	10,000	12,213,739	11,463,584	23,677,323
PIEDMONT	107,984	72,401	44,996	96,764	3,000	325,146	298,216	623,362
PLEASANTON	764,784	512,769	289,485	685,317	7,500	2,259,855	2,112,072	4,371,928
SAN LEANDRO	871,350	584,219	329,153	780,810	7,500	2,573,033	2,406,371	4,979,404
UNION CITY	671,711	450,366	254,839	601,915	7,500	1,986,332	1,855,037	3,841,369
<b>ALPINE COUNTY</b>								
<b>AMADOR COUNTY</b>								
AMADOR	1,917	1,285	5,736	1,718	1,000	11,655	5,293	16,948
IONE	86,604	58,066	47,094	77,605	2,000	271,369	239,171	510,540
JACKSON	48,213	32,326	28,345	43,204	2,000	154,088	133,149	287,238
PLYMOUTH	10,752	7,209	10,051	9,635	1,000	38,648	29,695	68,342
SUTTER CREEK	25,338	16,989	17,174	22,705	1,000	83,206	69,975	153,182
<b>BUTTE COUNTY</b>								
BIGGS	18,908	12,677	12,324	16,943	1,000	61,853	52,217	114,070
CHICO	1,091,028	731,508	438,982	977,662	10,000	3,249,179	3,013,045	6,262,225
GRIDLEY	70,207	47,072	32,739	62,912	2,000	214,931	193,888	408,819
OROVILLE	191,752	128,565	81,109	171,827	4,000	577,253	529,553	1,106,806
PARADISE	106,259	71,244	47,087	100,275	3,000	327,866	293,452	621,318
<b>CALAVERAS COUNTY</b>								
ANGELS CAMP	34,998	23,465	30,112	31,362	1,000	120,937	96,653	217,590
<b>COLUSA COUNTY</b>								
COLUSA	62,636	41,996	21,629	56,128	2,000	184,389	172,980	357,370
WILLIAMS	53,561	35,911	19,191	47,996	2,000	158,659	147,917	306,576

ATTACHMENT A

# Local Streets and Roads - Projected FY2025-26 Revenues

Based on State Dept of Finance statewide revenue projections

Estimated January 2026

	Highway Users Tax Acct (HUTA) <sup>(1)</sup> Streets & Highways Code					TOTAL HUTA	Road Mntnc Rehab Acct	TOTAL
	Sec2103 <sup>(3)</sup>	Sec2105 <sup>(3)</sup>	Sec2106 <sup>(3)</sup>	Sec2107 <sup>(3)</sup>	Sec2107.5 <sup>(4)</sup>			
<b>CONTRA COSTA COUNTY</b>								
ANTIOCH	1,119,145	750,360	449,674	1,002,857	10,000	3,332,036	3,090,696	6,422,732
BRENTWOOD	630,072	422,448	255,261	564,603	7,500	1,879,884	1,740,043	3,619,927
CLAYTON	106,029	71,090	46,948	95,012	3,000	322,080	292,817	614,897
CONCORD	1,202,893	806,511	482,965	1,077,903	10,000	3,580,273	3,321,980	6,902,253
DANVILLE	418,473	280,576	171,148	374,991	6,000	1,251,188	1,155,680	2,406,868
EL CERRITO	248,964	166,924	103,766	223,095	6,000	748,750	687,554	1,436,303
HERCULES	251,322	168,505	104,703	225,207	6,000	755,737	694,064	1,449,801
LAFAYETTE	243,655	163,365	101,656	218,337	6,000	733,013	672,892	1,405,904
MARTINEZ	359,747	241,202	147,804	322,366	6,000	1,077,118	993,498	2,070,616
MORAGA	165,820	111,178	70,715	148,590	4,000	500,302	457,937	958,239
OAKLEY	448,747	300,874	183,182	402,118	6,000	1,340,921	1,239,285	2,580,206
ORINDA	187,075	125,429	79,165	167,637	4,000	563,306	516,638	1,079,944
PINOLE	181,459	121,664	76,932	162,604	4,000	546,660	501,129	1,047,789
PITTSBURG	731,913	490,730	295,745	655,862	7,500	2,181,751	2,021,295	4,203,045
PLEASANT HILL	330,738	221,752	136,273	296,372	6,000	991,135	913,386	1,904,520
RICHMOND	1,110,702	744,699	446,318	995,292	10,000	3,307,011	3,067,380	6,374,391
SAN PABLO	308,630	206,929	127,484	276,561	6,000	925,603	852,329	1,777,932
SAN RAMON	810,736	543,579	327,078	726,494	7,500	2,415,387	2,238,975	4,654,362
WALNUT CREEK	673,762	451,741	272,629	603,753	7,500	2,009,385	1,860,701	3,870,086
<b>DEL NORTE COUNTY</b>								
CRESCENT CITY	64,515	43,256	25,093	57,811	2,000	192,674	178,167	370,842
<b>EL DORADO COUNTY</b>								
PLACERVILLE	103,691	69,522	71,964	93,324	3,000	341,501	286,359	627,860
SOUTH LAKE TAHOE	205,312	137,657	137,787	1,713,982	5,000	2,199,738	567,002	2,766,740

ATTACHMENT A

# Local Streets and Roads - Projected FY2025-26 Revenues

Based on State Dept of Finance statewide revenue projections

Estimated January 2026

	Highway Users Tax Acct (HUTA) <sup>(1)</sup> Streets & Highways Code					TOTAL HUTA	Road Mntnc Rehab Acct	TOTAL
	Sec2103 <sup>(3)</sup>	Sec2105 <sup>(3)</sup>	Sec2106 <sup>(3)</sup>	Sec2107 <sup>(3)</sup>	Sec2107.5 <sup>(4)</sup>			
<b>FRESNO COUNTY</b>								
CLOVIS	1,237,403	829,649	423,167	1,108,827	10,000	3,609,046	3,417,283	7,026,329
COALINGA	172,863	115,901	63,245	154,901	4,000	510,910	477,389	988,300
FIREBAUGH	83,509	55,991	33,034	74,832	2,000	249,365	230,622	479,988
FOWLER	73,475	49,263	29,642	65,840	2,000	220,221	202,913	423,133
FRESNO	5,338,194	3,579,131	1,809,649	4,783,514	20,000	15,530,488	14,742,266	30,272,754
HURON	66,431	44,541	27,260	59,529	2,000	199,761	183,461	383,221
KERMAN	168,043	112,669	61,615	150,582	4,000	496,909	464,077	960,986
KINGSBURG	127,314	85,361	47,845	114,085	3,000	377,605	351,597	729,202
MENDOTA	121,804	81,666	45,982	109,147	3,000	361,599	336,380	697,978
ORANGE COVE	93,121	62,435	36,284	83,445	2,000	277,285	257,168	534,453
PARLIER	140,385	94,125	52,264	125,798	3,000	415,573	387,697	803,270
REEDLEY	254,944	170,934	90,997	228,453	6,000	751,328	704,068	1,455,396
SANGER	259,103	173,722	92,403	232,180	6,000	763,409	715,554	1,478,963
SAN JOAQUIN	35,439	23,761	16,782	31,757	1,000	108,738	97,870	206,609
SELMA	236,832	158,790	84,873	212,223	5,000	697,718	654,048	1,351,765
<b>GLENN COUNTY</b>								
ORLAND	83,413	55,926	31,287	74,746	2,000	247,372	230,358	477,730
WILLOWS	62,052	41,604	24,504	55,604	2,000	185,764	171,366	357,130
<b>HUMBOLDT COUNTY</b>								
ARCATA	182,092	122,088	82,526	163,171	4,000	553,877	502,876	1,056,753
BLUE LAKE	11,548	7,743	9,729	10,348	1,000	40,368	31,891	72,259
EUREKA	258,480	173,305	115,132	231,622	6,000	784,539	713,834	1,498,373
FERNDALE	13,359	8,957	10,502	11,971	1,000	45,789	36,893	82,683
FORTUNA	120,079	80,510	56,055	107,601	3,000	367,245	331,616	698,861
RIO DELL	32,487	21,782	18,667	29,112	1,000	103,048	89,719	192,767
TRINIDAD	2,942	1,973	6,056	2,636	1,000	14,607	8,125	22,732
<b>IMPERIAL COUNTY</b>								
BRAWLEY	277,455	186,027	114,209	248,625	6,000	832,316	766,236	1,598,552
CALEXICO	384,031	257,483	156,234	344,127	6,000	1,147,876	1,060,562	2,208,437
CALIPATRIA	62,617	41,983	29,492	56,111	2,000	192,203	172,927	365,130
EL CENTRO	440,898	295,611	178,659	395,085	6,000	1,316,254	1,217,609	2,533,863
HOLTVILLE	54,481	36,528	26,283	48,820	2,000	168,112	150,458	318,570
IMPERIAL	219,131	146,922	91,210	196,362	5,000	658,625	605,166	1,263,791
WESTMORLAND	19,972	13,390	12,675	17,896	1,000	64,934	55,155	120,088
<b>INYO COUNTY</b>								
BISHOP	36,944	24,770	20,566	33,105	1,000	116,384	102,025	218,410

ATTACHMENT A

# Local Streets and Roads - Projected FY2025-26 Revenues

Based on State Dept of Finance statewide revenue projections

Estimated January 2026

	Highway Users Tax Acct (HUTA) <sup>(1)</sup> Streets & Highways Code					TOTAL HUTA	Road Mntnc Rehab Acct	TOTAL
	Sec2103 <sup>(3)</sup>	Sec2105 <sup>(3)</sup>	Sec2106 <sup>(3)</sup>	Sec2107 <sup>(3)</sup>	Sec2107.5 <sup>(4)</sup>			
<b>KERN COUNTY</b>								
ARVIN	191,579	128,449	57,506	171,673	4,000	553,208	529,077	1,082,284
BAKERSFIELD	4,017,676	2,693,755	1,110,116	3,600,208	10,000	11,431,754	11,095,445	22,527,199
CALIFORNIA CITY	143,922	96,496	44,395	128,967	4,000	417,780	397,463	815,242
DELANO	506,294	339,458	144,088	453,686	7,500	1,451,027	1,398,212	2,849,239
MARICOPA	9,832	6,592	7,505	8,811	1,000	33,741	27,154	60,895
MCFARLAND	136,207	91,324	42,272	122,054	3,000	394,857	376,158	771,015
RIDGECREST	272,031	182,390	79,639	243,765	6,000	783,825	751,257	1,535,082
SHAFTER	224,776	150,707	66,639	201,420	5,000	648,541	620,754	1,269,295
TAFT	82,138	55,072	27,397	73,603	2,000	240,211	226,838	467,049
TEHACHAPI	124,976	83,793	39,182	111,990	3,000	362,941	345,140	708,081
WASCO	259,831	174,211	76,283	232,833	6,000	749,158	717,566	1,466,724
<b>KINGS COUNTY</b>								
AVENAL	131,233	87,989	43,129	117,597	3,000	382,948	362,422	745,370
CORCORAN	207,248	138,955	65,330	185,713	5,000	602,246	572,348	1,174,594
HANFORD	586,861	393,476	176,201	525,882	7,500	1,689,920	1,620,709	3,310,629
LEMOORE	265,380	177,931	82,308	237,805	6,000	769,424	732,889	1,502,314
<b>LAKE COUNTY</b>								
CLEARLAKE	161,670	108,396	62,127	144,871	4,000	481,064	446,477	927,541
LAKEPORT	48,166	32,294	21,879	43,161	2,000	147,499	133,017	280,516
<b>LASSEN COUNTY</b>								
SUSANVILLE	155,565	104,303	50,014	173,901	4,000	487,784	429,618	917,402
<b>LOS ANGELES COUNTY</b>								
AGOURA HILLS	193,889	129,998	77,816	173,742	5,000	580,446	535,455	1,115,900
ALHAMBRA	791,780	530,870	302,976	709,508	7,500	2,342,634	2,186,626	4,529,260
ARCADIA	545,068	365,455	210,067	488,431	7,500	1,616,521	1,505,292	3,121,814
ARTESIA	157,137	105,357	63,976	140,809	4,000	471,279	433,959	905,238
AVALON	32,995	22,123	17,226	29,567	1,000	102,910	91,122	194,032
AZUSA	481,550	322,868	186,146	431,513	7,500	1,429,578	1,329,877	2,759,455
BALDWIN PARK	690,341	462,857	264,775	618,609	7,500	2,044,083	1,906,486	3,950,569
BELL	327,116	219,323	127,988	293,126	6,000	973,553	903,382	1,876,935
BELLFLOWER	755,699	506,678	289,388	677,176	7,500	2,236,441	2,086,983	4,323,424
BELL GARDENS	378,453	253,744	147,321	339,129	6,000	1,124,648	1,045,159	2,169,806
BEVERLY HILLS	313,364	210,103	122,809	280,803	6,000	933,079	865,403	1,798,482
BRADBURY	8,817	5,911	8,120	7,901	1,000	31,749	24,348	56,097
BURBANK	1,027,050	688,612	391,575	920,331	10,000	3,037,569	2,836,360	5,873,929
CALABASAS	222,572	149,229	88,618	199,445	5,000	664,863	614,667	1,279,530
CARSON	899,056	602,795	343,374	805,637	7,500	2,658,361	2,482,884	5,141,245
CERRITOS	473,040	317,162	182,942	423,888	6,000	1,403,032	1,306,376	2,709,407
CLAREMONT	367,365	246,310	143,146	329,193	6,000	1,092,014	1,014,538	2,106,552
COMMERCE	118,593	79,514	49,461	106,270	3,000	356,838	327,514	684,352
COMPTON	920,867	617,419	351,588	825,182	7,500	2,722,556	2,543,120	5,265,676

ATTACHMENT A

# Local Streets and Roads - Projected FY2025-26 Revenues

Based on State Dept of Finance statewide revenue projections

Estimated January 2026

	Highway Users Tax Acct (HUTA) <sup>(1)</sup> Streets & Highways Code					TOTAL HUTA	Road Mntnc Rehab Acct	TOTAL
	Sec2103 <sup>(3)</sup>	Sec2105 <sup>(3)</sup>	Sec2106 <sup>(3)</sup>	Sec2107 <sup>(3)</sup>	Sec2107.5 <sup>(4)</sup>			
COVINA	491,622	329,621	189,939	440,539	7,500	1,459,222	1,357,693	2,816,914
CUDAHY	218,240	146,325	86,987	195,563	5,000	652,115	602,704	1,254,819
CULVER CITY	387,500	259,809	150,728	347,236	6,000	1,151,273	1,070,142	2,221,416
DIAMOND BAR	526,649	353,106	203,130	471,926	7,500	1,562,311	1,454,425	3,016,736
DOWNEY	1,091,708	731,964	415,925	978,271	10,000	3,227,869	3,014,925	6,242,793
DUARTE	227,565	152,577	90,498	203,919	5,000	679,558	628,456	1,308,014
EL MONTE	1,045,996	701,315	398,710	937,309	10,000	3,093,330	2,888,683	5,982,013
EL SEGUNDO	165,915	111,242	67,282	148,675	4,000	497,115	458,201	955,316
GARDENA	583,670	391,336	224,603	523,022	7,500	1,730,132	1,611,896	3,342,028
GLENDALE	1,877,346	1,258,715	711,787	1,682,275	10,000	5,540,123	5,184,586	10,724,709
GLENDORA	503,161	337,357	194,285	450,878	7,500	1,493,181	1,389,557	2,882,738
HAWAIIAN GARDENS	133,648	89,608	55,131	119,761	3,000	401,148	369,091	770,240
HAWTHORNE	843,242	565,374	322,356	755,623	7,500	2,494,095	2,328,747	4,822,842
HERMOSA BEACH	188,886	126,644	75,933	169,260	4,000	564,723	521,640	1,086,362
HIDDEN HILLS	16,732	11,219	11,101	14,994	1,000	55,046	46,209	101,255
HUNTINGTON PARK	524,340	351,557	202,260	469,857	7,500	1,555,514	1,448,047	3,003,561
INDUSTRY	4,130	2,769	6,355	3,701	1,000	17,956	11,407	29,363
INGLEWOOD	1,039,891	697,222	396,411	931,839	10,000	3,075,364	2,871,824	5,947,188
IRWINDALE	14,461	9,696	10,246	12,959	1,000	48,361	39,937	88,298
LA CANADA FLINTRIDGE	196,850	131,983	78,932	176,396	5,000	589,161	543,633	1,132,794
LA HABRA HEIGHTS	54,184	36,329	25,205	48,554	2,000	166,272	149,637	315,909
LAKEWOOD	788,637	528,762	301,792	706,691	7,500	2,333,382	2,177,945	4,511,328
LA MIRADA	472,542	316,828	182,754	423,441	6,000	1,401,565	1,304,999	2,706,565
LANCASTER	1,703,601	1,142,223	646,357	1,526,583	10,000	5,028,764	4,704,762	9,733,526
LA PUENTE	364,241	244,215	141,969	326,394	6,000	1,082,819	1,005,910	2,088,729
LA VERNE	310,786	208,374	121,838	278,493	6,000	925,491	858,284	1,783,775
LAWNDALE	304,538	204,185	119,485	272,894	6,000	907,102	841,028	1,748,130
LOMITA	200,588	134,489	80,339	179,745	5,000	600,161	553,954	1,154,115
LONG BEACH	4,449,364	2,983,191	1,680,381	3,987,040	10,000	13,109,977	12,287,621	25,397,598
LOS ANGELES	37,360,766	25,049,494	14,074,445	33,478,692	20,000	109,983,397	103,177,654	213,161,050
LYNWOOD	656,953	440,471	252,201	588,691	7,500	1,945,816	1,814,280	3,760,096
MALIBU	102,886	68,983	43,546	92,195	3,000	310,610	284,136	594,746
MANHATTAN BEACH	339,842	227,856	132,781	304,530	6,000	1,011,009	938,528	1,949,537
MAYWOOD	240,809	161,456	95,486	215,787	6,000	719,538	665,031	1,384,569
MONROVIA	372,981	250,075	145,261	334,226	6,000	1,108,542	1,030,047	2,138,589
MONTEBELLO	601,178	403,076	231,197	538,711	7,500	1,781,662	1,660,249	3,441,911
MONTEREY PARK	585,414	392,506	225,260	524,585	7,500	1,735,265	1,616,713	3,351,978
NORWALK	991,045	664,472	378,017	888,068	10,000	2,931,602	2,736,928	5,668,531
PALMDALE	1,622,267	1,087,691	615,728	1,453,701	10,000	4,789,387	4,480,148	9,269,535
PALOS VERDES ESTATES	127,956	85,791	52,987	114,660	3,000	384,394	353,371	737,765
PARAMOUNT	512,389	343,545	197,760	459,148	7,500	1,520,342	1,415,044	2,935,386
PASADENA	1,347,706	903,605	512,331	1,207,669	10,000	3,981,311	3,721,904	7,703,215
PICO RIVERA	595,428	399,220	229,032	533,559	7,500	1,764,739	1,644,370	3,409,109

A t

ATTACHMENT A

# Local Streets and Roads - Projected FY2025-26 Revenues

Based on State Dept of Finance statewide revenue projections

Estimated January 2026

	Highway Users Tax Acct (HUTA) <sup>(1)</sup> Streets & Highways Code					TOTAL HUTA	Road Mntnc Rehab Acct	TOTAL
	Sec2103 <sup>(3)</sup>	Sec2105 <sup>(3)</sup>	Sec2106 <sup>(3)</sup>	Sec2107 <sup>(3)</sup>	Sec2107.5 <sup>(4)</sup>			
POMONA	1,466,644	983,350	557,122	1,314,249	10,000	4,331,365	4,050,370	8,381,735
RANCHO PALOS VERDES	404,501	271,208	157,130	362,470	6,000	1,201,309	1,117,093	2,318,402
REDONDO BEACH	672,948	451,195	258,225	603,023	7,500	1,992,890	1,858,451	3,851,341
ROLLING HILLS <sup>(2)</sup>								
ROLLING HILLS ESTATES	81,889	54,905	35,639	73,380	2,000	247,813	226,150	473,962
ROSEMEAD	489,600	328,265	189,178	438,727	7,500	1,453,270	1,352,108	2,805,379
SAN DIMAS	333,517	223,615	130,399	298,862	6,000	992,394	921,061	1,913,455
SAN FERNANDO	227,047	152,230	90,303	203,455	5,000	678,035	627,026	1,305,062
SAN GABRIEL	378,080	253,493	147,181	338,794	6,000	1,123,548	1,044,127	2,167,674
SAN MARINO	120,251	80,625	50,085	107,756	3,000	361,718	332,092	693,810
SANTA CLARITA	2,226,934	1,493,106	843,438	1,995,538	10,000	6,569,016	6,150,030	12,719,047
SANTA FE SPRINGS	179,859	120,591	72,533	161,170	4,000	538,153	496,709	1,034,862
SANTA MONICA	893,881	599,325	341,425	800,999	7,500	2,643,131	2,468,592	5,111,723
SIERRA MADRE	107,103	71,810	45,134	95,974	3,000	323,020	295,781	618,801
SIGNAL HILL	112,690	75,556	47,238	100,980	3,000	339,464	311,211	650,674
SOUTH EL MONTE	187,219	125,526	75,305	167,765	4,000	559,815	517,035	1,076,850
SOUTH GATE	890,814	597,269	340,271	798,251	7,500	2,634,105	2,460,123	5,094,228
SOUTH PASADENA	258,327	173,202	102,083	231,485	6,000	771,097	713,411	1,484,507
TEMPLE CITY	350,192	234,795	136,678	313,805	6,000	1,041,471	967,111	2,008,582
TORRANCE	1,407,017	943,371	534,667	1,260,817	10,000	4,155,873	3,885,700	8,041,573
VERNON	2,022	1,356	5,561	1,812	1,000	11,751	5,584	17,336
WALNUT	272,453	182,673	107,403	244,143	6,000	812,671	752,421	1,565,092
WEST COVINA	1,050,088	704,059	400,251	940,976	10,000	3,105,374	2,899,984	6,005,358
WEST HOLLYWOOD	341,999	229,302	133,593	306,462	6,000	1,017,355	944,483	1,961,838
WESTLAKE VILLAGE	78,056	52,335	34,195	69,945	2,000	236,531	215,563	452,094
WHITTIER	841,891	564,468	321,847	754,412	7,500	2,490,118	2,325,016	4,815,134

ATTACHMENT A

## Local Streets and Roads - Projected FY2025-26 Revenues

Based on State Dept of Finance statewide revenue projections

Estimated January 2026

	Highway Users Tax Acct (HUTA) <sup>(1)</sup> Streets & Highways Code					TOTAL HUTA	Road Mntnc Rehab Acct	TOTAL
	Sec2103 <sup>(3)</sup>	Sec2105 <sup>(3)</sup>	Sec2106 <sup>(3)</sup>	Sec2107 <sup>(3)</sup>	Sec2107.5 <sup>(4)</sup>			
<b>MADERA COUNTY</b>								
CHOWCHILLA	184,670	123,817	51,574	165,481	4,000	529,541	509,995	1,039,536
MADERA	636,742	426,920	166,076	570,579	7,500	1,807,817	1,758,463	3,566,280
<b>MARIN COUNTY</b>								
BELVEDERE	20,355	13,647	13,431	18,240	1,000	66,673	56,213	122,886
CORTE MADERA	97,855	65,609	46,292	87,687	3,000	300,444	270,242	570,685
FAIRFAX	72,785	48,801	35,662	65,222	2,000	224,470	201,007	425,477
LARKSPUR	125,349	84,044	57,951	112,325	3,000	382,668	346,172	728,840
MILL VALLEY	135,421	90,797	62,221	121,350	3,000	412,789	373,987	786,777
NOVATO	509,505	341,611	220,840	456,563	7,500	1,536,018	1,407,078	2,943,096
ROSS	22,387	15,010	14,292	20,060	1,000	72,749	61,824	134,573
SAN ANSELMO	122,522	82,148	56,752	109,791	3,000	374,214	338,365	712,578
SAN RAFAEL	590,301	395,783	255,098	528,964	7,500	1,777,648	1,630,210	3,407,858
SAUSALITO	68,223	45,742	33,728	61,134	2,000	210,828	188,410	399,238
TIBURON	87,524	58,683	41,912	78,430	2,000	268,548	241,712	510,260
<b>MARIPOSA COUNTY</b>								
<b>MENDOCINO COUNTY</b>								
FORT BRAGG	68,875	46,179	33,752	61,718	2,000	212,525	190,209	402,734
POINT ARENA	4,408	2,956	6,653	3,950	1,000	18,967	12,174	31,142
UKIAH	159,102	106,674	71,680	142,570	4,000	484,025	439,384	923,409
WILLITS	47,408	31,786	24,729	42,482	1,000	147,406	130,926	278,332
<b>MERCED COUNTY</b>								
ATWATER	305,342	204,725	94,390	273,615	6,000	884,072	843,252	1,727,324
DOS PALOS	55,535	37,235	21,094	49,765	2,000	165,629	153,369	318,998
GUSTINE	58,257	39,060	21,893	52,203	2,000	173,413	160,885	334,298
LIVINGSTON	138,392	92,789	45,405	124,012	3,000	403,598	382,192	785,790
LOS BANOS	468,584	314,174	142,286	419,895	6,000	1,350,939	1,294,069	2,645,008
MERCED	939,535	629,936	280,467	841,910	7,500	2,699,348	2,594,675	5,294,023
<b>MODOC COUNTY</b>								
ALTURAS	26,067	17,477	14,381	24,921	1,000	83,846	71,987	155,832
<b>MONO COUNTY</b>								
MAMMOTH LAKES	69,191	46,391	65,523	2,046,819	2,000	2,229,924	191,083	2,421,007

A

ATTACHMENT A

# Local Streets and Roads - Projected FY2025-26 Revenues

Based on State Dept of Finance statewide revenue projections

Estimated January 2026

	Highway Users Tax Acct (HUTA) <sup>(1)</sup> Streets & Highways Code					TOTAL HUTA	Road Mntnc Rehab Acct	TOTAL
	Sec2103 <sup>(3)</sup>	Sec2105 <sup>(3)</sup>	Sec2106 <sup>(3)</sup>	Sec2107 <sup>(3)</sup>	Sec2107.5 <sup>(4)</sup>			
<b>MONTEREY COUNTY</b>								
CARMEL-BY-THE-SEA	30,360	20,356	13,656	27,205	1,000	92,576	83,843	176,420
DEL REY OAKS	15,132	10,146	9,214	13,560	1,000	49,051	41,789	90,841
GONZALES	81,918	54,924	28,694	73,406	2,000	240,942	226,229	467,171
GREENFIELD	199,188	133,551	62,900	178,491	5,000	579,131	550,090	1,129,222
KING CITY	137,463	92,165	44,896	123,179	3,000	400,703	379,625	780,328
MARINA	221,240	148,336	69,332	198,251	5,000	642,159	610,988	1,253,147
MONTEREY	272,874	182,956	84,394	244,521	6,000	790,744	753,586	1,544,330
PACIFIC GROVE	143,538	96,239	46,668	128,624	3,000	418,069	396,404	814,473
SALINAS	1,550,345	1,039,469	457,014	1,389,252	10,000	4,446,080	4,281,522	8,727,602
SAND CITY	3,575	2,397	5,843	3,203	1,000	16,017	9,872	25,889
SEASIDE	313,670	210,308	96,293	281,078	6,000	907,350	866,250	1,773,600
SOLEDAD	264,019	177,019	81,811	236,586	6,000	765,435	729,131	1,494,566
<b>NAPA COUNTY</b>								
AMERICAN CANYON	214,627	143,902	71,098	192,326	5,000	626,953	592,727	1,219,680
CALISTOGA	50,188	33,650	20,303	44,973	2,000	151,113	138,601	289,714
NAPA	746,729	500,664	235,463	669,138	7,500	2,159,494	2,062,211	4,221,705
SAINT HELENA	51,711	34,671	20,774	46,338	2,000	155,494	142,809	298,303
YOUNTVILLE	28,606	19,180	13,636	25,634	1,000	88,056	79,000	167,056
<b>NEVADA COUNTY</b>								
GRASS VALLEY	130,428	87,449	118,687	116,876	3,000	456,441	360,199	816,640
NEVADA CITY	32,085	21,512	32,816	34,351	1,000	121,764	88,607	210,371
TRUCKEE	162,226	108,768	146,452	2,079,169	4,000	2,500,616	448,012	2,948,628

ATTACHMENT A

# Local Streets and Roads - Projected FY2025-26 Revenues

Based on State Dept of Finance statewide revenue projections

Estimated January 2026

	Highway Users Tax Acct (HUTA) <sup>(1)</sup> Streets & Highways Code					TOTAL HUTA	Road Mntnc Rehab Acct	TOTAL
	Sec2103 <sup>(3)</sup>	Sec2105 <sup>(3)</sup>	Sec2106 <sup>(3)</sup>	Sec2107 <sup>(3)</sup>	Sec2107.5 <sup>(4)</sup>			
<b>ORANGE COUNTY</b>								
ALISO VIEJO	496,356	332,795	217,084	444,781	7,500	1,498,516	1,370,767	2,869,283
ANAHEIM	3,319,256	2,225,481	1,424,392	2,974,359	10,000	9,953,487	9,166,648	19,120,136
BREA	459,039	307,775	201,124	411,341	6,000	1,385,279	1,267,709	2,652,988
BUENA PARK	807,018	541,086	349,948	723,162	7,500	2,428,714	2,228,707	4,657,421
COSTA MESA	1,078,110	722,846	465,890	966,086	10,000	3,242,931	2,977,370	6,220,301
CYPRESS	482,566	323,549	211,186	432,424	7,500	1,457,224	1,332,683	2,789,907
DANA POINT	317,580	212,930	140,624	284,581	6,000	961,716	877,048	1,838,764
FOUNTAIN VALLEY	547,455	367,055	238,937	490,570	7,500	1,651,517	1,511,882	3,163,399
FULLERTON	1,378,804	924,455	594,492	1,235,536	10,000	4,143,287	3,807,785	7,951,072
GARDEN GROVE	1,647,816	1,104,821	709,544	1,476,595	10,000	4,948,777	4,550,705	9,499,483
HUNTINGTON BEACH	1,900,604	1,274,309	817,657	1,703,117	10,000	5,705,688	5,248,819	10,954,506
IRVINE	3,053,511	2,047,306	1,310,737	2,736,228	10,000	9,157,782	8,432,753	17,590,535
LAGUNA BEACH	220,300	147,706	99,019	197,410	5,000	669,435	608,395	1,277,830
LAGUNA HILLS	300,618	201,557	133,369	269,381	6,000	910,926	830,204	1,741,130
LAGUNA NIGUEL	625,376	419,300	272,263	560,395	7,500	1,884,834	1,727,075	3,611,909
LAGUNA WOODS	170,046	114,012	77,526	152,377	4,000	517,960	469,608	987,568
LA HABRA	601,226	403,108	261,935	538,754	7,500	1,812,523	1,660,381	3,472,904
LAKE FOREST	839,869	563,112	363,998	752,600	7,500	2,527,080	2,319,431	4,846,511
LA PALMA	149,240	100,062	68,628	133,733	4,000	455,663	412,151	867,814
LOS ALAMITOS	115,057	77,143	54,008	103,102	3,000	352,309	317,748	670,057
MISSION VIEJO	896,995	601,414	388,430	803,790	7,500	2,698,129	2,477,194	5,175,323
NEWPORT BEACH	815,499	546,772	353,576	730,762	7,500	2,454,109	2,252,129	4,706,238
ORANGE	1,348,301	904,003	581,446	1,208,202	10,000	4,051,951	3,723,545	7,775,496
PLACENTIA	517,325	346,854	226,051	463,571	7,500	1,561,300	1,428,674	2,989,974
RANCHO SANTA MARGARITA	459,183	307,871	201,185	411,470	6,000	1,385,709	1,268,106	2,653,815
SAN CLEMENTE	614,317	411,885	267,533	550,485	7,500	1,851,720	1,696,534	3,548,254
SAN JUAN CAPISTRANO	338,568	227,002	149,600	303,388	6,000	1,024,557	935,008	1,959,565
SANTA ANA	3,021,848	2,026,076	1,297,195	2,707,855	10,000	9,062,974	8,345,311	17,408,285
SEAL BEACH	242,438	162,549	108,487	217,247	6,000	736,720	669,530	1,406,250
STANTON	388,621	260,561	171,007	348,240	6,000	1,174,430	1,073,239	2,247,669
TUSTIN	769,940	516,226	334,091	689,937	7,500	2,317,694	2,126,311	4,444,005
VILLA PARK	56,148	37,646	28,814	50,314	2,000	174,923	155,063	329,985
WESTMINSTER	871,446	584,284	377,503	780,896	7,500	2,621,629	2,406,636	5,028,265
YORBA LINDA	652,114	437,226	283,698	584,354	7,500	1,964,892	1,800,914	3,765,807

ATTACHMENT A

# Local Streets and Roads - Projected FY2025-26 Revenues

Based on State Dept of Finance statewide revenue projections

Estimated January 2026

	Highway Users Tax Acct (HUTA) <sup>(1)</sup> Streets & Highways Code					TOTAL HUTA	Road Mntnc Rehab Acct	TOTAL
	Sec2103 <sup>(3)</sup>	Sec2105 <sup>(3)</sup>	Sec2106 <sup>(3)</sup>	Sec2107 <sup>(3)</sup>	Sec2107.5 <sup>(4)</sup>			
<b>PLACER COUNTY</b>								
AUBURN	131,933	88,458	59,955	118,224	3,000	401,570	364,354	765,924
COLFAX	19,157	12,844	12,809	18,506	1,000	64,316	52,905	117,221
LINCOLN	522,480	350,311	223,225	468,191	7,500	1,571,707	1,442,912	3,014,619
LOOMIS	65,233	43,737	32,071	58,455	2,000	201,497	180,152	381,649
ROCKLIN	701,228	470,156	297,952	628,365	7,500	2,105,201	1,936,551	4,041,752
ROSEVILLE	1,518,893	1,018,381	639,780	1,361,068	10,000	4,548,121	4,194,662	8,742,783
<b>PLUMAS COUNTY</b>								
PORTOLA	20,230	13,564	9,483	169,727	1,000	214,005	55,869	269,874
<b>RIVERSIDE COUNTY</b>								
BANNING	306,176	205,284	133,383	274,362	6,000	925,206	845,554	1,770,760
BEAUMONT	572,199	383,645	245,104	512,743	7,500	1,721,190	1,580,217	3,301,407
BLYTHE	179,955	120,655	80,375	161,256	4,000	546,241	496,974	1,043,215
CALIMESA	105,359	70,640	49,047	94,411	3,000	322,457	290,964	613,421
CANYON LAKE	105,991	71,064	49,313	94,978	3,000	324,346	292,711	617,057
CATHEDRAL CITY	494,986	331,876	212,677	443,553	7,500	1,490,592	1,366,982	2,857,575
COACHELLA	425,344	285,183	183,430	381,148	6,000	1,281,105	1,174,656	2,455,761
CORONA	1,525,246	1,022,641	645,351	1,366,761	10,000	4,569,999	4,212,208	8,782,208
DESERT HOT SPRINGS	318,759	213,720	138,668	285,638	6,000	962,785	880,304	1,843,088
EASTVALE	668,903	448,484	285,716	599,399	7,500	2,010,003	1,847,282	3,857,285
HEMET	881,029	590,709	374,802	789,484	7,500	2,643,524	2,433,102	5,076,625
INDIAN WELLS	46,594	31,240	24,368	41,752	1,000	144,954	128,676	273,631
INDIO	886,827	594,596	377,237	794,679	7,500	2,660,839	2,449,113	5,109,953
JURUPA VALLEY	1,015,138	680,625	431,123	909,657	10,000	3,046,543	2,803,463	5,850,006
LAKE ELSINORE	707,083	474,082	301,751	633,612	7,500	2,124,028	1,952,722	4,076,750
LA QUINTA	371,793	249,278	160,940	333,161	6,000	1,121,172	1,026,765	2,147,937
MENIFEE	1,105,106	740,947	468,906	990,277	10,000	3,315,235	3,051,924	6,367,159
MORENO VALLEY	2,020,376	1,354,613	853,288	1,810,443	10,000	6,048,721	5,579,587	11,628,309
MURRIETA	1,071,305	718,284	454,711	959,988	10,000	3,214,290	2,958,579	6,172,869
NORCO	255,184	171,094	111,968	228,668	6,000	772,914	704,730	1,477,644
PALM DESERT	498,139	333,990	214,001	446,378	7,500	1,500,009	1,375,689	2,875,698
PALM SPRINGS	426,226	285,774	183,800	381,938	6,000	1,283,738	1,177,090	2,460,829
PERRIS	778,546	521,996	331,762	697,649	7,500	2,337,453	2,150,077	4,487,530
RANCHO MIRAGE	164,066	110,002	73,702	147,018	4,000	498,788	453,094	951,881
RIVERSIDE	3,069,879	2,058,280	1,294,044	2,750,895	10,000	9,183,098	8,477,957	17,661,055
SAN JACINTO	526,985	353,330	226,115	472,227	7,500	1,586,157	1,455,351	3,041,509
TEMECULA	1,075,436	721,054	456,446	963,690	10,000	3,226,625	2,969,986	6,196,611
WILDOMAR	355,319	238,233	154,022	318,399	6,000	1,071,973	981,270	2,053,243

ATTACHMENT A

# Local Streets and Roads - Projected FY2025-26 Revenues

Based on State Dept of Finance statewide revenue projections

Estimated January 2026

	Highway Users Tax Acct (HUTA) <sup>(1)</sup> Streets & Highways Code					TOTAL HUTA	Road Mntnc Rehab Acct	TOTAL
	Sec2103 <sup>(3)</sup>	Sec2105 <sup>(3)</sup>	Sec2106 <sup>(3)</sup>	Sec2107 <sup>(3)</sup>	Sec2107.5 <sup>(4)</sup>			
<b>SACRAMENTO COUNTY</b>								
CITRUS HEIGHTS	840,655	563,639	372,451	753,304	7,500	2,537,549	2,321,601	4,859,151
ELK GROVE	1,752,226	1,174,826	771,117	1,570,156	10,000	5,278,325	4,839,049	10,117,374
FOLSOM	887,191	594,840	392,803	795,005	7,500	2,677,340	2,450,119	5,127,460
GALT	250,047	167,650	114,155	224,065	6,000	761,918	690,544	1,452,462
ISLETON	7,619	5,108	8,132	6,827	1,000	28,686	21,040	49,726
RANCHO CORDOVA	818,901	549,053	362,937	733,811	7,500	2,472,202	2,261,524	4,733,727
SACRAMENTO	5,059,771	3,392,455	2,217,635	4,534,022	20,000	15,223,882	13,973,357	29,197,239
<b>SAN BENITO COUNTY</b>								
HOLLISTER	416,796	279,452	177,604	373,488	6,000	1,253,339	1,151,048	2,404,387
SAN JUAN BAUTISTA	19,972	13,390	13,080	17,896	1,000	65,339	55,155	120,493
<b>SAN BERNARDINO COUNTY</b>								
ADELANTO	356,019	238,702	149,389	319,026	6,000	1,069,136	983,202	2,052,339
APPLE VALLEY	727,534	487,784	300,272	651,938	7,500	2,175,038	2,009,317	4,184,338
BARSTOW	244,699	164,065	104,179	219,273	6,000	738,217	675,776	1,413,994
BIG BEAR LAKE	48,309	32,390	24,420	629,279	2,000	736,398	133,414	869,812
CHINO	912,386	611,733	375,346	817,582	7,500	2,724,546	2,519,698	5,244,244
CHINO HILLS	751,118	503,607	309,851	673,071	7,500	2,245,147	2,074,332	4,319,479
COLTON	515,168	345,408	214,025	461,638	7,500	1,543,739	1,422,719	2,966,458
FONTANA	2,100,387	1,408,259	857,827	1,882,140	10,000	6,258,613	5,800,550	12,059,163
GRAND TERRACE	125,790	84,339	55,887	112,720	3,000	381,736	347,389	729,125
HESPERIA	975,501	654,050	400,979	874,139	10,000	2,914,670	2,694,001	5,608,671
HIGHLAND	547,090	366,811	226,989	490,243	7,500	1,638,634	1,510,876	3,149,510
LOMA LINDA	242,668	162,703	103,354	217,453	6,000	732,178	670,166	1,402,343
MONTCLAIR	364,328	244,273	152,764	326,471	6,000	1,093,835	1,006,148	2,099,984
NEEDLES	47,188	31,638	23,984	42,285	1,000	146,076	130,317	276,393
ONTARIO	1,767,195	1,184,862	722,508	1,583,570	10,000	5,268,136	4,880,389	10,148,525
RANCHO CUCAMONGA	1,686,581	1,130,812	689,769	1,511,332	10,000	5,028,493	4,657,759	9,686,252
REDLANDS	704,256	472,187	290,818	631,078	7,500	2,105,840	1,944,915	4,050,754
RIALTO	1,011,659	678,293	415,664	906,540	10,000	3,022,155	2,793,856	5,816,012
SAN BERNARDINO	2,138,222	1,433,626	873,193	1,916,044	10,000	6,371,084	5,905,037	12,276,121
TWENTYNINE PALMS	270,986	181,690	114,855	242,829	6,000	816,360	748,372	1,564,732
UPLAND	758,421	508,593	312,816	679,615	7,500	2,266,855	2,094,499	4,361,354
VICTORVILLE	1,351,367	906,059	553,629	1,210,950	10,000	4,032,005	3,732,014	7,764,019
YUCAIPA	525,528	352,354	218,232	470,922	7,500	1,574,535	1,451,328	3,025,864
YUCCA VALLEY	211,091	141,531	90,530	189,157	5,000	637,309	582,961	1,220,270

ATTACHMENT A

# Local Streets and Roads - Projected FY2025-26 Revenues

Based on State Dept of Finance statewide revenue projections

Estimated January 2026

	Highway Users Tax Acct (HUTA) <sup>(1)</sup> Streets & Highways Code					TOTAL HUTA	Road Mntnc Rehab Acct	TOTAL
	Sec2103 <sup>(3)</sup>	Sec2105 <sup>(3)</sup>	Sec2106 <sup>(3)</sup>	Sec2107 <sup>(3)</sup>	Sec2107.5 <sup>(4)</sup>			
<b>SAN DIEGO COUNTY</b>								
CARLSBAD	1,115,187	747,706	484,938	999,311	10,000	3,357,142	3,079,766	6,436,907
CHULA VISTA	2,696,745	1,808,102	1,165,868	2,416,532	10,000	8,097,248	7,447,487	15,544,734
CORONADO	225,245	151,022	101,778	201,841	5,000	684,886	622,051	1,306,937
DEL MAR	37,864	25,387	21,102	33,929	1,000	119,281	104,566	223,847
EL CAJON	1,018,904	683,151	443,483	913,032	10,000	3,068,570	2,813,864	5,882,434
ENCINITAS	593,742	398,090	260,432	532,047	7,500	1,791,811	1,639,712	3,431,522
ESCONDIDO	1,449,845	972,086	629,023	1,299,195	10,000	4,360,149	4,003,976	8,364,124
IMPERIAL BEACH	254,695	170,767	114,457	228,230	6,000	774,149	703,380	1,477,529
LA MESA	583,698	391,356	256,108	523,048	7,500	1,761,710	1,611,976	3,373,686
LEMON GROVE	269,894	180,957	121,001	241,850	6,000	819,703	745,355	1,565,057
NATIONAL CITY	565,078	378,871	248,091	506,362	7,500	1,705,903	1,560,553	3,266,455
OCEANSIDE	1,670,749	1,120,197	724,132	1,497,145	10,000	5,022,223	4,614,038	9,636,261
POWAY	482,796	323,703	212,665	432,630	7,500	1,459,294	1,333,318	2,792,612
SAN DIEGO	13,502,239	9,052,926	5,818,113	12,099,251	20,000	40,492,530	37,288,565	77,781,095
SAN MARCOS	930,757	624,050	405,532	834,044	7,500	2,801,883	2,570,432	5,372,316
SANTEE	571,681	383,298	250,934	512,279	7,500	1,725,692	1,578,787	3,304,480
SOLANA BEACH	124,448	83,440	58,381	111,517	3,000	380,786	348,684	729,470
VISTA	973,652	652,810	424,000	872,482	7,500	2,930,444	2,688,893	5,619,337
<b>SAN FRANCISCO COUNTY</b>								
SAN FRANCISCO	8,375,452	5,615,539	2,123,371	7,505,178	20,000	23,639,540	23,130,133	46,769,673
<b>SAN JOAQUIN COUNTY</b>								
ESCALON	71,338	47,830	33,628	63,925	2,000	218,722	197,011	415,733
LATHROP	369,876	247,993	154,269	331,443	6,000	1,109,582	1,021,472	2,131,053
LODI	642,971	431,097	264,628	576,161	7,500	1,922,357	1,775,666	3,698,023
MANTECA	898,270	602,268	367,795	804,932	7,500	2,680,766	2,480,714	5,161,479
MOUNTAIN HOUSE	275,951	185,018	118,291	247,277	5,000	831,537	762,081	1,593,618
RIPON	153,217	102,729	66,716	137,297	4,000	463,959	423,134	887,093
STOCKTON	3,075,054	2,061,750	1,247,445	2,755,532	10,000	9,149,781	8,492,248	17,642,030
TRACY	941,222	631,067	385,152	843,422	7,500	2,808,363	2,599,333	5,407,696
<b>SAN LUIS OBISPO COUNTY</b>								
ARROYO GRANDE	175,824	117,886	92,108	157,555	4,000	547,374	485,567	1,032,941
ATASCADERO	295,165	197,901	151,369	264,495	6,000	914,930	815,145	1,730,075
EL PASO DE ROBLES	300,752	201,647	154,143	269,502	6,000	932,044	830,574	1,762,619
GROVER BEACH	122,561	82,174	65,659	109,826	3,000	383,220	338,470	721,690
MORRO BAY	101,171	67,833	55,038	90,658	3,000	317,699	279,399	597,098
PISMO BEACH	77,184	51,750	43,127	69,164	2,000	243,224	213,155	456,379
SAN LUIS OBISPO	474,698	318,274	240,519	425,373	6,000	1,464,864	1,310,954	2,775,819

## ATTACHMENT A

## Local Streets and Roads - Projected FY2025-26 Revenues

Based on State Dept of Finance statewide revenue projections

Estimated January 2026

	Highway Users Tax Acct (HUTA) <sup>(1)</sup> Streets & Highways Code					TOTAL HUTA	Road Mntnc Rehab Acct	TOTAL
	Sec2103 <sup>(3)</sup>	Sec2105 <sup>(3)</sup>	Sec2106 <sup>(3)</sup>	Sec2107 <sup>(3)</sup>	Sec2107.5 <sup>(4)</sup>			
<b>SAN MATEO COUNTY</b>								
ATHERTON	68,827	46,147	34,292	61,675	2,000	212,942	190,077	403,019
BELMONT	270,306	181,234	120,626	242,219	6,000	820,385	746,493	1,566,878
BRISBANE	46,488	31,169	24,720	41,658	1,000	145,036	128,385	273,422
BURLINGAME	302,372	202,733	134,366	270,953	6,000	916,424	835,047	1,751,471
COLMA	14,202	9,522	10,886	12,727	1,000	48,337	39,222	87,559
DALY CITY	1,004,673	673,609	435,303	900,280	10,000	3,023,864	2,774,563	5,798,427
EAST PALO ALTO	287,824	192,979	128,133	257,917	6,000	872,853	794,872	1,667,726
FOSTER CITY	322,822	216,445	143,130	289,279	6,000	977,675	891,525	1,869,200
HALF MOON BAY	112,613	75,504	53,055	100,912	3,000	345,084	310,999	656,083
HILLSBOROUGH	108,991	73,076	51,503	97,666	3,000	334,235	300,995	635,229
MENLO PARK	327,221	219,394	145,014	293,220	6,000	990,850	903,673	1,894,523
MILLBRAE	223,492	149,846	100,566	200,269	6,000	679,173	617,208	1,296,381
PACIFICA	370,633	248,501	163,617	332,122	6,000	1,120,872	1,023,563	2,144,435
PORTOLA VALLEY	42,521	28,509	23,020	38,103	1,000	133,153	117,429	250,582
REDWOOD CITY	799,763	536,222	347,499	716,662	7,500	2,407,646	2,208,672	4,616,318
SAN BRUNO	421,674	282,722	185,488	377,859	6,000	1,273,742	1,164,519	2,438,262
SAN CARLOS	294,571	197,503	131,024	263,963	6,000	893,060	813,504	1,706,564
SAN MATEO	1,013,116	679,270	438,921	907,845	10,000	3,049,151	2,797,879	5,847,030
SOUTH SAN FRANCISCO	634,969	425,731	276,885	568,991	7,500	1,914,076	1,753,567	3,667,643
WOODSIDE	50,858	34,099	26,593	45,574	2,000	159,125	140,454	299,578
<b>SANTA BARBARA COUNTY</b>								
BUELLTON	49,296	33,052	21,682	44,174	2,000	150,205	136,140	286,344
CARPINTERIA	125,934	84,436	47,928	112,848	3,000	374,145	347,786	721,932
GOLETA	313,824	210,411	112,273	281,215	6,000	923,722	866,674	1,790,396
GUADALUPE	84,822	56,871	33,848	76,008	2,000	253,549	234,248	487,797
LOMPOC	426,887	286,218	150,992	382,530	6,000	1,252,628	1,178,917	2,431,544
SANTA BARBARA	837,655	561,628	291,665	750,617	7,500	2,449,065	2,313,318	4,762,382
SANTA MARIA	1,075,321	720,977	373,056	963,587	10,000	3,142,940	2,969,668	6,112,608
SOLVANG	55,717	37,357	23,881	49,928	2,000	168,883	153,872	322,755

ATTACHMENT A

# Local Streets and Roads - Projected FY2025-26 Revenues

Based on State Dept of Finance statewide revenue projections

Estimated January 2026

	Highway Users Tax Acct (HUTA) <sup>(1)</sup> Streets & Highways Code					TOTAL HUTA	Road Mntnc Rehab Acct	TOTAL
	Sec2103 <sup>(3)</sup>	Sec2105 <sup>(3)</sup>	Sec2106 <sup>(3)</sup>	Sec2107 <sup>(3)</sup>	Sec2107.5 <sup>(4)</sup>			
<b>SANTA CLARA COUNTY</b>								
CAMPBELL	419,048	280,962	172,577	375,506	6,000	1,254,093	1,157,268	2,411,360
CUPERTINO	578,236	387,693	236,312	518,153	7,500	1,727,894	1,596,890	3,324,784
GILROY	596,128	399,689	243,476	534,186	7,500	1,780,979	1,646,302	3,427,280
LOS ALTOS	303,982	203,812	126,507	272,396	6,000	912,697	839,493	1,752,190
LOS ALTOS HILLS	81,918	54,924	37,598	73,406	2,000	249,846	226,229	476,075
LOS GATOS	320,513	214,896	133,126	287,209	6,000	961,744	885,147	1,846,891
MILPITAS	785,014	526,333	319,101	703,445	7,500	2,341,395	2,167,941	4,509,336
MONTE SERENO	34,854	23,369	18,755	31,233	1,000	109,211	96,256	205,467
MORGAN HILL	446,571	299,415	183,597	400,169	6,000	1,335,752	1,233,277	2,569,030
MOUNTAIN VIEW	829,078	555,877	336,744	742,931	7,500	2,472,130	2,289,631	4,761,761
PALO ALTO	659,272	442,026	268,757	590,769	7,500	1,968,324	1,830,684	3,799,009
SAN JOSE	9,702,612	6,505,368	3,889,499	8,694,435	20,000	28,811,914	26,795,295	55,607,209
SANTA CLARA	1,289,785	864,770	521,200	1,155,766	10,000	3,841,521	3,561,945	7,403,466
SARATOGA	298,136	199,893	124,167	267,157	6,000	895,353	823,349	1,718,702
SUNNYVALE	1,530,191	1,025,956	617,453	1,371,192	10,000	4,554,793	4,225,865	8,780,658
<b>SANTA CRUZ COUNTY</b>								
CAPITOLA	94,482	63,348	40,096	84,664	2,000	284,590	260,926	545,515
SANTA CRUZ	619,990	415,689	236,414	555,569	7,500	1,835,162	1,712,201	3,547,363
SCOTTS VALLEY	115,661	77,548	48,008	103,643	3,000	347,859	319,415	667,274
WATSONVILLE	496,500	332,891	190,281	444,910	7,500	1,472,083	1,371,164	2,843,247
<b>SHASTA COUNTY</b>								
ANDERSON	107,055	71,778	60,257	95,931	3,000	338,020	295,649	633,669
REDDING	898,394	602,352	470,188	805,044	7,500	2,783,478	2,481,058	5,264,536
SHASTA LAKE	99,110	66,451	56,141	88,812	3,000	313,515	273,709	587,223
<b>SIERRA COUNTY</b>								
LOYALTON	7,072	4,742	6,449	7,779	1,000	27,043	19,532	46,575
<b>SISKIYOU COUNTY</b>								
DORRIS	8,222	5,513	8,917	7,368	1,000	31,020	22,708	53,728
DUNSMUIR	16,320	10,942	12,971	51,146	1,000	92,380	45,071	137,451
ETNA	6,555	4,395	8,082	5,874	1,000	25,906	18,103	44,008
FORT JONES	6,651	4,459	8,130	5,960	1,000	26,200	18,367	44,567
MONTAGUE	11,778	7,897	10,697	10,554	1,000	41,925	32,526	74,452
MOUNT SHASTA	31,059	20,825	20,350	90,158	1,000	163,392	85,775	249,167
TULELAKE	8,625	5,783	9,118	7,729	1,000	32,255	23,819	56,074
WEED	27,974	18,756	18,805	66,222	1,000	132,757	77,254	210,010
YREKA	75,507	50,625	42,603	75,048	2,000	245,783	208,524	454,307

ATTACHMENT A

# Local Streets and Roads - Projected FY2025-26 Revenues

Based on State Dept of Finance statewide revenue projections

Estimated January 2026

	Highway Users Tax Acct (HUTA) <sup>(1)</sup> Streets & Highways Code					TOTAL HUTA	Road Mntnc Rehab Acct	TOTAL
	Sec2103 <sup>(3)</sup>	Sec2105 <sup>(3)</sup>	Sec2106 <sup>(3)</sup>	Sec2107 <sup>(3)</sup>	Sec2107.5 <sup>(4)</sup>			
<b>SOLANO COUNTY</b>								
BENICIA	259,534	174,012	113,822	232,567	6,000	785,935	716,745	1,502,680
DIXON	193,333	129,625	86,013	173,244	4,000	586,215	533,920	1,120,135
FAIRFIELD	1,156,894	775,669	490,773	1,036,683	10,000	3,470,019	3,194,945	6,664,964
RIO VISTA	99,072	66,425	46,417	88,778	3,000	303,692	273,603	577,295
SUISUN CITY	282,266	189,253	123,371	252,936	6,000	853,825	779,522	1,633,347
VACAVILLE	988,813	662,975	420,167	886,067	10,000	2,968,022	2,730,762	5,698,784
VALLEJO	1,206,880	809,184	511,770	1,081,476	10,000	3,619,310	3,332,990	6,952,300
<b>SONOMA COUNTY</b>								
CLOVERDALE	86,336	57,886	41,689	77,365	2,000	265,276	238,430	503,706
COTATI	72,651	48,711	35,842	65,102	2,000	224,305	200,637	424,942
HEALDSBURG	108,368	72,658	51,103	97,107	3,000	332,236	299,275	631,511
PETALUMA	573,349	384,416	249,778	513,773	7,500	1,728,816	1,583,392	3,312,208
ROHNERT PARK	422,354	283,178	185,262	378,468	6,000	1,275,263	1,166,398	2,441,661
SANTA ROSA	1,710,156	1,146,618	735,507	1,532,457	10,000	5,134,738	4,722,865	9,857,603
SEBASTOPOL	72,095	48,338	35,604	64,604	2,000	222,641	199,102	421,743
SONOMA	103,212	69,201	48,900	92,487	3,000	316,800	285,036	601,836
WINDSOR	251,245	168,454	112,151	225,139	6,000	762,988	693,852	1,456,840
<b>STANISLAUS COUNTY</b>								
CERES	481,368	322,746	193,163	431,350	7,500	1,436,127	1,329,374	2,765,501
HUGHSON	76,446	51,255	34,714	68,503	2,000	232,917	211,117	444,034
MODESTO	2,106,070	1,412,069	828,919	1,887,233	10,000	6,244,291	5,816,244	12,060,535
NEWMAN	118,727	79,604	51,259	106,391	3,000	358,980	327,884	686,865
OAKDALE	222,629	149,268	91,916	199,496	5,000	668,309	614,826	1,283,135
PATTERSON	247,900	166,211	101,805	222,142	6,000	744,058	684,616	1,428,674
RIVERBANK	250,028	167,638	102,638	224,048	6,000	750,351	690,491	1,440,842
TURLOCK	692,095	464,033	275,621	620,181	7,500	2,059,430	1,911,330	3,970,760
WATERFORD	87,869	58,914	39,184	78,739	2,000	266,706	242,664	509,370
<b>SUTTER COUNTY</b>								
LIVE OAK	92,555	62,056	39,593	82,938	2,000	279,142	255,606	534,748
YUBA CITY	675,171	452,686	258,605	605,015	7,500	1,998,978	1,864,591	3,863,569
<b>TEHAMA COUNTY</b>								
CORNING	79,235	53,125	34,596	71,001	2,000	239,957	218,819	458,775
RED BLUFF	141,909	95,147	58,164	127,164	3,000	425,384	391,905	817,289
TEHAMA	4,159	2,789	6,364	3,727	1,000	18,039	11,486	29,525
<b>TRINITY COUNTY</b>								

ATTACHMENT A

# Local Streets and Roads - Projected FY2025-26 Revenues

Based on State Dept of Finance statewide revenue projections

Estimated January 2026

	Highway Users Tax Acct (HUTA) <sup>(1)</sup> Streets & Highways Code					TOTAL HUTA	Road Mntnc Rehab Acct	TOTAL
	Sec2103 <sup>(3)</sup>	Sec2105 <sup>(3)</sup>	Sec2106 <sup>(3)</sup>	Sec2107 <sup>(3)</sup>	Sec2107.5 <sup>(4)</sup>			
<b>TULARE COUNTY</b>								
DINUBA	249,405	167,220	95,433	223,490	6,000	741,547	688,771	1,430,318
EXETER	99,187	66,502	40,844	88,881	3,000	298,414	273,920	572,335
FARMERSVILLE	99,589	66,772	40,990	89,241	3,000	299,594	275,032	574,626
LINDSAY	121,947	81,763	49,115	109,276	3,000	365,101	336,777	701,878
PORTERVILLE	609,707	408,794	226,365	546,354	7,500	1,798,721	1,683,804	3,482,525
TULARE	699,599	469,064	259,031	626,905	7,500	2,062,099	1,932,052	3,994,151
VISALIA	1,408,531	944,386	516,655	1,262,174	10,000	4,141,747	3,889,882	8,031,629
WOODLAKE	76,714	51,435	32,678	68,743	2,000	231,570	211,858	443,428
<b>TUOLUMNE COUNTY</b>								
SONORA	49,862	33,431	33,276	44,681	2,000	163,250	137,701	300,951
<b>VENTURA COUNTY</b>								
CAMARILLO	678,238	454,742	295,232	607,763	7,500	2,043,475	1,873,060	3,916,535
FILLMORE	163,251	109,456	74,707	146,288	4,000	497,702	450,844	948,546
MOORPARK	347,106	232,727	153,436	311,039	6,000	1,050,309	958,589	2,008,898
OJAI	73,676	49,398	36,349	66,021	2,000	227,444	203,469	430,913
OXNARD	1,932,938	1,295,989	832,514	1,732,091	10,000	5,803,532	5,338,114	11,141,646
PORT HUENEME	211,455	141,776	95,348	189,483	5,000	643,062	583,967	1,227,029
SAN BUENAVENTURA	1,054,928	707,304	456,537	945,312	10,000	3,174,080	2,913,349	6,087,429
SANTA PAULA	303,388	203,414	134,715	271,863	6,000	919,380	837,853	1,757,233
SIMI VALLEY	1,209,400	810,874	522,684	1,083,734	10,000	3,636,693	3,339,950	6,976,643
THOUSAND OAKS	1,215,409	814,903	525,257	1,089,119	10,000	3,654,688	3,356,544	7,011,232
<b>YOLO COUNTY</b>								
DAVIS	626,967	420,366	281,819	561,820	7,500	1,898,472	1,731,468	3,629,941
WEST SACRAMENTO	530,943	355,984	239,391	475,773	7,500	1,609,591	1,466,282	3,075,873
WINTERS	76,867	51,538	38,763	68,880	2,000	238,049	212,282	450,330
WOODLAND	590,551	395,950	265,728	529,188	7,500	1,788,917	1,630,899	3,419,815
<b>YUBA COUNTY</b>								
MARYSVILLE	126,126	84,564	45,299	113,020	3,000	372,009	348,316	720,324
WHEATLAND	38,448	25,779	17,146	34,453	1,000	116,825	106,181	223,006
Statewide Total	\$ 320,491,000	\$ 214,881,500	\$ 128,094,662	\$ 293,573,000	\$ 2,724,000	\$ 959,764,162	\$ 885,086,500	\$ 1,844,850,662

**Notes:**

1. The Highway Users Tax is also known as the "Motor Vehicle Fuel Tax", the "Gasoline Excise Tax" and "Article XIX Revenues."
2. Rolling Hills has no public streets and is therefore not eligible for HUTA or RMRA allocations.
3. Str&HwysCode §§ 2103, 2105, 2106, 2107 and RMRA amounts are paid monthly. Includes special payments for snow removal.
4. Str&HwysCode § 2107.5 amounts are typically paid by the State Controller once per year in July.

ATTACHMENT B

# Local Streets and Roads - Projected FY2026-27 Revenues

Based on State Dept of Finance statewide revenue projections

Estimated January 2026

	Highway Users Tax Acct (HUTA) <sup>(1)</sup> Streets & Highways Code					TOTAL HUTA	Road Mntnc Rehab Acct	TOTAL
	Sec2103 <sup>(3)</sup>	Sec2105 <sup>(3)</sup>	Sec2106 <sup>(3)</sup>	Sec2107 <sup>(3)</sup>	Sec2107.5 <sup>(4)</sup>			
<b>ALAMEDA COUNTY</b>								
ALAMEDA	772,536	516,581	291,689	690,786	7,500	2,279,092	2,217,185	4,496,277
ALBANY	206,977	138,402	81,663	185,075	5,000	617,118	594,027	1,211,145
BERKELEY	1,254,789	839,055	470,778	1,122,008	10,000	3,696,630	3,601,256	7,297,886
DUBLIN	730,214	488,281	275,972	652,943	7,500	2,154,909	2,095,719	4,250,628
EMERYVILLE	131,699	88,065	53,708	117,762	3,000	394,233	377,976	772,210
FREMONT	2,274,191	1,520,710	849,343	2,033,536	10,000	6,687,780	6,526,946	13,214,726
HAYWARD	1,603,623	1,072,314	600,321	1,433,928	10,000	4,720,186	4,602,412	9,322,598
LIVERMORE	858,012	573,737	323,431	767,217	7,500	2,529,896	2,462,500	4,992,397
NEWARK	477,932	319,584	182,285	427,357	6,000	1,413,159	1,371,669	2,784,828
OAKLAND	4,234,655	2,831,636	1,577,381	3,786,544	10,000	12,440,216	12,153,495	24,593,711
PIEDMONT	110,161	73,663	45,709	98,504	3,000	331,037	316,163	647,201
PLEASANTON	780,201	521,706	294,535	697,640	7,500	2,301,582	2,239,183	4,540,765
SAN LEANDRO	888,915	594,401	334,907	794,850	7,500	2,620,574	2,551,193	5,171,767
UNION CITY	685,252	458,215	259,275	612,738	7,500	2,022,981	1,966,678	3,989,659
<b>ALPINE COUNTY</b>								
<b>AMADOR COUNTY</b>								
AMADOR	1,955	1,307	5,753	1,748	1,000	11,764	5,612	17,375
IONE	88,350	59,078	47,844	79,001	2,000	276,272	253,565	529,837
JACKSON	49,185	32,889	28,763	43,981	2,000	156,818	141,162	297,981
PLYMOUTH	10,969	7,335	10,144	9,808	1,000	39,257	31,482	70,738
SUTTER CREEK	25,849	17,285	17,394	23,114	1,000	84,641	74,187	158,828
<b>BUTTE COUNTY</b>								
BIGGS	19,289	12,898	12,458	17,248	1,000	62,893	55,359	118,252
CHICO	1,113,021	744,257	446,685	995,241	10,000	3,309,203	3,194,379	6,503,582
GRIDLEY	71,622	47,893	33,235	64,043	2,000	218,793	205,557	424,350
OROVILLE	195,617	130,806	82,463	174,917	4,000	587,803	561,423	1,149,226
PARADISE	108,401	72,486	47,837	101,987	3,000	333,711	311,113	644,824
<b>CALAVERAS COUNTY</b>								
ANGELS CAMP	35,704	23,874	30,561	31,925	1,000	123,065	102,470	225,535
<b>COLUSA COUNTY</b>								
COLUSA	63,899	42,728	21,928	57,137	2,000	187,692	183,391	371,082
WILLIAMS	54,641	36,537	19,446	48,859	2,000	161,482	156,819	318,301

ATTACHMENT B

## Local Streets and Roads - Projected FY2026-27 Revenues

Based on State Dept of Finance statewide revenue projections

Estimated January 2026

	Highway Users Tax Acct (HUTA) <sup>(1)</sup> Streets & Highways Code					TOTAL HUTA	Road Mntnc Rehab Acct	TOTAL
	Sec2103 <sup>(3)</sup>	Sec2105 <sup>(3)</sup>	Sec2106 <sup>(3)</sup>	Sec2107 <sup>(3)</sup>	Sec2107.5 <sup>(4)</sup>			
<b>CONTRA COSTA COUNTY</b>								
ANTIOCH	1,141,705	763,437	457,566	1,020,890	10,000	3,393,598	3,276,703	6,670,301
BRENTWOOD	642,773	429,811	259,705	574,755	7,500	1,914,543	1,844,764	3,759,307
CLAYTON	108,167	72,329	47,696	96,721	3,000	327,912	310,440	638,352
CONCORD	1,227,142	820,567	491,448	1,097,285	10,000	3,646,442	3,521,906	7,168,348
DANVILLE	426,909	285,466	174,099	381,733	6,000	1,274,207	1,225,232	2,499,439
EL CERRITO	253,983	169,834	105,522	227,106	6,000	762,445	728,932	1,491,377
HERCULES	256,388	171,442	106,476	229,257	6,000	769,562	735,835	1,505,397
LAFAYETTE	248,567	166,212	103,374	222,263	6,000	746,416	713,388	1,459,804
MARTINEZ	366,999	245,405	150,341	328,163	6,000	1,096,907	1,053,289	2,150,196
MORAGA	169,162	113,116	71,885	151,261	4,000	509,424	485,497	994,920
OAKLEY	457,793	306,118	186,347	409,349	6,000	1,365,606	1,313,869	2,679,475
ORINDA	190,846	127,615	80,484	170,651	4,000	573,597	547,730	1,121,327
PINOLE	185,117	123,785	78,212	165,528	4,000	556,642	531,288	1,087,930
PITTSBURG	746,668	499,283	300,906	667,655	7,500	2,222,012	2,142,942	4,364,954
PLEASANT HILL	337,405	225,617	138,605	301,701	6,000	1,009,328	968,356	1,977,684
RICHMOND	1,133,092	757,678	454,151	1,013,188	10,000	3,368,109	3,251,983	6,620,092
SAN PABLO	314,851	210,535	129,661	281,533	6,000	942,580	903,625	1,846,205
SAN RAMON	827,079	553,053	332,795	739,557	7,500	2,459,984	2,373,723	4,833,707
WALNUT CREEK	687,344	459,614	277,380	614,609	7,500	2,046,448	1,972,683	4,019,130
<b>DEL NORTE COUNTY</b>								
CRESCENT CITY	65,815	44,009	25,453	58,851	2,000	196,128	188,890	385,018
<b>EL DORADO COUNTY</b>								
PLACERVILLE	105,781	70,734	73,155	94,994	3,000	347,665	303,593	651,258
SOUTH LAKE TAHOE	209,451	140,056	140,146	1,717,290	5,000	2,211,943	601,126	2,813,069

ATTACHMENT B

# Local Streets and Roads - Projected FY2026-27 Revenues

Based on State Dept of Finance statewide revenue projections

Estimated January 2026

	Highway Users Tax Acct (HUTA) <sup>(1)</sup> Streets & Highways Code					TOTAL HUTA	Road Mntnc Rehab Acct	TOTAL
	Sec2103 <sup>(3)</sup>	Sec2105 <sup>(3)</sup>	Sec2106 <sup>(3)</sup>	Sec2107 <sup>(3)</sup>	Sec2107.5 <sup>(4)</sup>			
<b>FRESNO COUNTY</b>								
CLOVIS	1,262,347	844,108	430,589	1,128,765	10,000	3,675,809	3,622,945	7,298,754
COALINGA	176,348	117,921	64,282	157,687	4,000	520,237	506,120	1,026,357
FIREBAUGH	85,192	56,966	33,535	76,177	2,000	253,871	244,502	498,373
FOWLER	74,956	50,122	30,083	67,024	2,000	224,185	215,125	439,310
FRESNO	5,445,802	3,641,509	1,841,668	4,869,527	20,000	15,818,506	15,629,497	31,448,003
HURON	67,770	45,317	27,659	60,599	2,000	203,345	194,502	397,847
KERMAN	171,430	114,632	62,623	153,290	4,000	505,975	492,006	997,982
KINGSBURG	129,880	86,849	48,609	116,136	3,000	384,474	372,758	757,231
MENDOTA	124,259	83,090	46,712	111,110	3,000	368,171	356,624	724,795
ORANGE COVE	94,998	63,523	36,843	84,945	2,000	282,309	272,645	554,954
PARLIER	143,215	95,766	53,107	128,060	3,000	423,148	411,029	834,177
REEDLEY	260,083	173,913	92,526	232,561	6,000	765,083	746,441	1,511,524
SANGER	264,326	176,750	93,957	236,355	6,000	777,389	758,618	1,536,007
SAN JOAQUIN	36,153	24,175	16,995	32,328	1,000	110,651	103,760	214,411
SELMA	241,606	161,557	86,294	216,039	5,000	710,496	693,410	1,403,906
<b>GLENN COUNTY</b>								
ORLAND	85,094	56,901	31,757	76,090	2,000	251,842	244,221	496,063
WILLOWS	63,303	42,329	24,853	56,604	2,000	189,089	181,679	370,768
<b>HUMBOLDT COUNTY</b>								
ARCATA	185,763	124,216	83,905	166,105	4,000	563,988	533,140	1,097,128
BLUE LAKE	11,781	7,877	9,817	10,534	1,000	41,009	33,811	74,819
EUREKA	263,691	176,325	117,089	235,787	6,000	798,892	756,795	1,555,687
FERNDALE	13,628	9,113	10,603	12,186	1,000	46,531	39,114	85,645
FORTUNA	122,499	81,913	56,965	109,536	3,000	373,913	351,573	725,486
RIO DELL	33,142	22,162	18,913	29,635	1,000	104,852	95,118	199,970
TRINIDAD	3,001	2,007	6,078	2,684	1,000	14,770	8,614	23,384
<b>IMPERIAL COUNTY</b>								
BRAWLEY	283,048	189,269	116,150	253,096	6,000	847,563	812,350	1,659,913
CALEXICO	391,772	261,971	158,921	350,315	6,000	1,168,979	1,124,389	2,293,368
CALIPATRIA	63,879	42,715	29,930	57,120	2,000	195,644	183,334	378,978
EL CENTRO	449,786	300,763	181,743	402,189	6,000	1,340,482	1,290,889	2,631,370
HOLTVILLE	55,579	37,165	26,665	49,698	2,000	171,106	159,513	330,619
IMPERIAL	223,549	149,483	92,743	199,893	5,000	670,667	641,586	1,312,253
WESTMORLAND	20,374	13,624	12,815	18,218	1,000	66,031	58,474	124,505
<b>INYO COUNTY</b>								
BISHOP	37,688	25,201	20,846	33,700	1,000	118,436	108,166	226,601

ATTACHMENT B

# Local Streets and Roads - Projected FY2026-27 Revenues

Based on State Dept of Finance statewide revenue projections

Estimated January 2026

	Highway Users Tax Acct (HUTA) <sup>(1)</sup> Streets & Highways Code					TOTAL HUTA	Road Mntnc Rehab Acct	TOTAL
	Sec2103 <sup>(3)</sup>	Sec2105 <sup>(3)</sup>	Sec2106 <sup>(3)</sup>	Sec2107 <sup>(3)</sup>	Sec2107.5 <sup>(4)</sup>			
<b>KERN COUNTY</b>								
ARVIN	195,441	130,688	58,441	174,760	4,000	563,330	560,918	1,124,248
BAKERSFIELD	4,098,664	2,740,702	1,129,725	3,664,944	10,000	11,644,035	11,763,201	23,407,236
CALIFORNIA CITY	146,823	98,178	45,097	131,286	4,000	425,384	421,383	846,767
DELANO	516,500	345,374	146,559	461,844	7,500	1,477,778	1,482,360	2,960,138
MARICOPA	10,031	6,707	7,553	8,969	1,000	34,260	28,788	63,048
MCFARLAND	138,953	92,915	42,937	124,249	3,000	402,054	398,796	800,850
RIDGECREST	277,515	185,569	80,967	248,148	6,000	798,199	796,469	1,594,668
SHAFTER	229,307	153,333	67,736	205,042	5,000	660,418	658,113	1,318,531
TAFT	83,794	56,032	27,798	74,927	2,000	244,551	240,490	485,040
TEHACHAPI	127,495	85,253	39,792	114,003	3,000	369,544	365,911	735,455
WASCO	265,069	177,247	77,551	237,020	6,000	762,887	760,751	1,523,638
<b>KINGS COUNTY</b>								
AVENAL	133,879	89,522	43,809	119,712	3,000	389,922	384,233	774,155
CORCORAN	211,426	141,377	66,404	189,053	5,000	613,259	606,794	1,220,052
HANFORD	598,691	400,334	179,242	535,338	7,500	1,721,104	1,718,248	3,439,352
LEMOORE	270,730	181,032	83,683	242,081	6,000	783,526	776,997	1,560,523
<b>LAKE COUNTY</b>								
CLEARLAKE	164,929	110,285	63,144	147,476	4,000	489,834	473,347	963,181
LAKEPORT	49,136	32,857	22,182	43,937	2,000	150,112	141,022	291,134
<b>LASSEN COUNTY</b>								
SUSANVILLE	158,701	106,121	50,816	176,408	4,000	496,046	455,474	951,520
<b>LOS ANGELES COUNTY</b>								
AGOURA HILLS	197,797	132,263	79,112	176,866	5,000	591,039	567,680	1,158,719
ALHAMBRA	807,741	540,122	308,265	722,266	7,500	2,385,894	2,318,224	4,704,118
ARCADIA	556,056	371,824	213,708	497,214	7,500	1,646,302	1,595,885	3,242,187
ARTESIA	160,305	107,193	65,026	143,341	4,000	479,865	460,076	939,940
AVALON	33,660	22,508	17,446	30,098	1,000	104,713	96,606	201,318
AZUSA	491,257	328,495	189,364	439,273	7,500	1,455,889	1,409,913	2,865,801
BALDWIN PARK	704,257	470,924	269,387	629,733	7,500	2,081,801	2,021,224	4,103,025
BELL	333,710	223,146	130,174	298,397	6,000	991,425	957,750	1,949,175
BELLFLOWER	770,933	515,509	294,437	689,353	7,500	2,277,730	2,212,583	4,490,314
BELL GARDENS	386,082	258,166	149,850	345,227	6,000	1,145,325	1,108,059	2,253,384
BEVERLY HILLS	319,681	213,765	124,903	285,852	6,000	950,200	917,486	1,867,686
BRADBURY	8,994	6,014	8,179	8,043	1,000	32,230	25,814	58,044
BURBANK	1,047,753	700,613	398,437	936,880	10,000	3,093,684	3,007,060	6,100,744
CALABASAS	227,058	151,830	90,105	203,031	5,000	677,024	651,659	1,328,683
CARSON	917,179	613,301	349,381	820,123	7,500	2,707,483	2,632,311	5,339,794
CERRITOS	482,576	322,690	186,102	431,510	6,000	1,428,877	1,384,997	2,813,874

ATTACHMENT B

## Local Streets and Roads - Projected FY2026-27 Revenues

Based on State Dept of Finance statewide revenue projections

Estimated January 2026

	Highway Users Tax Acct (HUTA) <sup>(1)</sup> Streets & Highways Code					TOTAL HUTA	Road Mntnc Rehab Acct	TOTAL
	Sec2103 <sup>(3)</sup>	Sec2105 <sup>(3)</sup>	Sec2106 <sup>(3)</sup>	Sec2107 <sup>(3)</sup>	Sec2107.5 <sup>(4)</sup>			
CLAREMONT	374,771	250,602	145,600	335,113	6,000	1,112,086	1,075,596	2,187,682
COMMERCE	120,984	80,900	50,253	108,181	3,000	363,318	347,224	710,542
COMPTON	939,430	628,180	357,740	840,020	7,500	2,772,870	2,696,172	5,469,041
COVINA	501,532	335,366	193,224	448,460	7,500	1,486,082	1,439,402	2,925,485
CUDAHY	222,639	148,875	88,445	199,080	5,000	664,039	638,977	1,303,016
CULVER CITY	395,311	264,337	153,317	353,479	6,000	1,172,445	1,134,547	2,306,992
DIAMOND BAR	537,265	359,260	206,649	480,412	7,500	1,591,086	1,541,956	3,133,042
DOWNEY	1,113,715	744,721	423,219	995,862	10,000	3,287,516	3,196,371	6,483,887
DUARTE	232,152	155,236	92,019	207,586	5,000	691,992	666,278	1,358,270
EL MONTE	1,067,081	713,538	405,699	954,163	10,000	3,150,480	3,062,532	6,213,012
EL SEGUNDO	169,260	113,181	68,390	151,349	4,000	506,180	485,777	991,957
GARDENA	595,435	398,157	228,503	532,426	7,500	1,762,022	1,708,905	3,470,926
GLENDALE	1,915,189	1,280,652	724,330	1,712,524	10,000	5,642,695	5,496,609	11,139,304
GLENORA	513,303	343,237	197,646	458,986	7,500	1,520,672	1,473,185	2,993,857
HAWAIIAN GARDENS	136,343	91,170	56,023	121,915	3,000	408,450	391,304	799,755
HAWTHORNE	860,241	575,227	327,989	769,210	7,500	2,540,167	2,468,898	5,009,065
HERMOSA BEACH	192,694	128,851	77,194	172,303	4,000	575,043	553,034	1,128,076
HIDDEN HILLS	17,070	11,414	11,213	15,263	1,000	55,960	48,990	104,950
HUNTINGTON PARK	534,909	357,684	205,763	478,305	7,500	1,584,162	1,535,194	3,119,356
INDUSTRY	4,214	2,818	6,383	3,768	1,000	18,182	12,093	30,275
INGLEWOOD	1,060,854	709,373	403,359	948,594	10,000	3,132,180	3,044,659	6,176,839
IRVINDALE	14,753	9,865	10,343	13,192	1,000	49,152	42,340	91,492
LA CANADA FLINTRIDGE	200,818	134,284	80,247	179,568	5,000	599,916	576,350	1,176,266
LA HABRA HEIGHTS	55,276	36,962	25,567	49,427	2,000	169,232	158,643	327,875
LAKEWOOD	804,534	537,977	307,061	719,399	7,500	2,376,471	2,309,020	4,685,491
LA MIRADA	482,068	322,350	185,911	431,055	6,000	1,427,384	1,383,538	2,810,921
LANCASTER	1,737,942	1,162,130	657,738	1,554,033	10,000	5,121,844	4,987,908	10,109,752
LA PUENTE	371,584	248,471	144,403	332,263	6,000	1,102,720	1,066,448	2,169,169
LA VERNE	317,051	212,006	123,915	283,500	6,000	942,472	909,938	1,852,410
LAWNDALE	310,676	207,744	121,520	277,801	6,000	923,741	891,644	1,815,385
LOMITA	204,631	136,833	81,679	182,977	5,000	611,120	587,293	1,198,413
LONG BEACH	4,539,055	3,035,183	1,710,106	4,058,732	10,000	13,353,076	13,027,125	26,380,201
LOS ANGELES	38,113,889	25,486,062	14,324,048	34,080,677	20,000	112,024,676	109,387,175	221,411,851
LYNWOOD	670,196	448,148	256,590	599,276	7,500	1,981,710	1,923,468	3,905,178
MALIBU	104,960	70,185	44,233	93,853	3,000	316,231	301,236	617,468
MANHATTAN BEACH	346,693	231,827	135,051	310,006	6,000	1,029,577	995,011	2,024,589
MAYWOOD	245,663	164,270	97,095	219,667	6,000	732,695	705,055	1,437,749
MONROVIA	380,500	254,433	147,752	340,235	6,000	1,128,921	1,092,038	2,220,959
MONTEBELLO	613,297	410,101	235,213	548,398	7,500	1,814,509	1,760,167	3,574,676

## ATTACHMENT B

## Local Streets and Roads - Projected FY2026-27 Revenues

Based on State Dept of Finance statewide revenue projections

Estimated January 2026

	Highway Users Tax Acct (HUTA) <sup>(1)</sup> Streets & Highways Code					TOTAL HUTA	Road Mntnc Rehab Acct	TOTAL
	Sec2103 <sup>(3)</sup>	Sec2105 <sup>(3)</sup>	Sec2106 <sup>(3)</sup>	Sec2107 <sup>(3)</sup>	Sec2107.5 <sup>(4)</sup>			
MONTEREY PARK	597,215	399,347	229,171	534,017	7,500	1,767,250	1,714,011	3,481,261
NORWALK	1,011,023	676,053	384,638	904,037	10,000	2,985,750	2,901,644	5,887,394
PALMDALE	1,654,969	1,106,648	626,566	1,479,840	10,000	4,878,023	4,749,775	9,627,799
PALOS VERDES ESTATES	130,535	87,287	53,842	116,722	3,000	391,386	374,637	766,023
PARAMOUNT	522,718	349,532	201,183	467,404	7,500	1,548,337	1,500,205	3,048,543
PASADENA	1,374,874	919,353	521,335	1,229,385	10,000	4,054,946	3,945,899	8,000,845
PICO RIVERA	607,431	406,178	233,010	543,153	7,500	1,797,272	1,743,332	3,540,604
POMONA	1,496,209	1,000,488	566,920	1,337,880	10,000	4,411,498	4,294,133	8,705,631
RANCHO PALOS VERDES	412,655	275,935	159,833	368,988	6,000	1,223,410	1,184,322	2,407,732
REDONDO BEACH	686,513	459,059	262,720	613,866	7,500	2,029,658	1,970,298	3,999,956
ROLLING HILLS <sup>(2)</sup>								
ROLLING HILLS ESTATES	83,540	55,862	36,186	74,700	2,000	252,287	239,760	492,047
ROSEMEAD	499,470	333,986	192,449	446,616	7,500	1,480,021	1,433,482	2,913,503
SAN DIMAS	340,240	227,513	132,627	304,236	6,000	1,010,616	976,493	1,987,109
SAN FERNANDO	231,624	154,883	91,820	207,113	5,000	690,440	664,763	1,355,203
SAN GABRIEL	385,701	257,911	149,706	344,886	6,000	1,144,205	1,106,965	2,251,170
SAN MARINO	122,675	82,031	50,889	109,694	3,000	368,288	352,078	720,366
SANTA CLARITA	2,271,825	1,519,128	858,316	2,031,420	10,000	6,690,689	6,520,156	13,210,846
SANTA FE SPRINGS	183,485	122,693	73,735	164,068	4,000	547,980	526,602	1,074,583
SANTA MONICA	911,899	609,771	347,397	815,402	7,500	2,691,970	2,617,159	5,309,129
SIERRA MADRE	109,262	73,061	45,849	97,700	3,000	328,872	313,582	642,454
SIGNAL HILL	114,961	76,873	47,991	102,796	3,000	345,621	329,940	675,561
SOUTH EL MONTE	190,993	127,714	76,555	170,782	4,000	570,044	548,151	1,118,195
SOUTH GATE	908,771	607,679	346,222	812,605	7,500	2,682,776	2,608,180	5,290,957
SOUTH PASADENA	263,534	176,221	103,809	235,647	6,000	785,211	756,346	1,541,557
TEMPLE CITY	357,251	238,888	139,018	319,447	6,000	1,060,604	1,025,315	2,085,919
TORRANCE	1,435,380	959,813	544,067	1,283,488	10,000	4,232,748	4,119,553	8,352,301
VERNON	2,063	1,379	5,575	1,845	1,000	11,862	5,920	17,782
WALNUT	277,945	185,857	109,223	248,533	6,000	827,557	797,704	1,625,261
WEST COVINA	1,071,256	716,329	407,267	957,896	10,000	3,162,747	3,074,513	6,237,260
WEST HOLLYWOOD	348,893	233,298	135,878	311,973	6,000	1,036,041	1,001,325	2,037,366
WESTLAKE VILLAGE	79,629	53,247	34,716	71,203	2,000	240,795	228,537	469,332
WHITTIER	858,862	574,305	327,471	767,977	7,500	2,536,116	2,464,942	5,001,058

## ATTACHMENT B

## Local Streets and Roads - Projected FY2026-27 Revenues

Based on State Dept of Finance statewide revenue projections

Estimated January 2026

	Highway Users Tax Acct (HUTA) <sup>(1)</sup> Streets & Highways Code					TOTAL HUTA	Road Mntnc Rehab Acct	TOTAL
	Sec2103 <sup>(3)</sup>	Sec2105 <sup>(3)</sup>	Sec2106 <sup>(3)</sup>	Sec2107 <sup>(3)</sup>	Sec2107.5 <sup>(4)</sup>			
<b>MADERA COUNTY</b>								
CHOWCHILLA	188,392	125,975	52,403	168,457	4,000	539,227	540,688	1,079,915
MADERA	649,577	434,361	168,937	580,839	7,500	1,841,214	1,864,293	3,705,507
<b>MARIN COUNTY</b>								
BELVEDERE	20,765	13,885	13,584	18,568	1,000	67,802	59,596	127,399
CORTE MADERA	99,827	66,753	47,028	89,264	3,000	305,872	286,506	592,378
FAIRFAX	74,252	49,651	36,210	66,395	2,000	228,508	213,105	441,612
LARKSPUR	127,876	85,508	58,893	114,344	3,000	389,622	367,006	756,628
MILL VALLEY	138,151	92,379	63,240	123,532	3,000	420,302	396,495	816,797
NOVATO	519,775	347,564	224,673	464,773	7,500	1,564,285	1,491,760	3,056,045
ROSS	22,838	15,271	14,461	20,421	1,000	73,991	65,545	139,536
SAN ANSELMO	124,992	83,580	57,673	111,765	3,000	381,011	358,728	739,739
SAN RAFAEL	602,201	402,681	259,540	538,476	7,500	1,810,397	1,728,321	3,538,718
SAUSALITO	69,599	46,539	34,241	62,234	2,000	214,613	199,749	414,362
TIBURON	89,288	59,706	42,570	79,840	2,000	273,404	256,259	529,663
<b>MARIPOSA COUNTY</b>								
<b>MENDOCINO COUNTY</b>								
FORT BRAGG	70,263	46,984	34,266	62,828	2,000	216,341	201,657	417,998
POINT ARENA	4,497	3,007	6,686	4,021	1,000	19,212	12,907	32,118
UKIAH	162,309	108,533	72,866	145,133	4,000	492,841	465,828	958,669
WILLITS	48,364	32,340	25,082	43,246	1,000	150,033	138,806	288,838
<b>MERCED COUNTY</b>								
ATWATER	311,498	208,293	95,979	278,535	6,000	900,305	894,001	1,794,305
DOS PALOS	56,655	37,884	21,384	50,659	2,000	168,581	162,599	331,181
GUSTINE	59,431	39,740	22,196	53,142	2,000	176,510	170,568	347,078
LIVINGSTON	141,182	94,406	46,126	126,242	3,000	410,955	405,193	816,149
LOS BANOS	478,030	319,650	144,725	427,445	6,000	1,375,850	1,371,950	2,747,800
MERCED	958,475	640,914	285,358	857,049	7,500	2,749,295	2,750,830	5,500,125
<b>MODOC COUNTY</b>								
ALTURAS	26,592	17,782	14,551	25,341	1,000	85,266	76,319	161,585
<b>MONO COUNTY</b>								
MAMMOTH LAKES	70,586	47,200	66,600	2,047,934	2,000	2,234,320	202,583	2,436,902

# Local Streets and Roads - Projected FY2026-27 Revenues

Based on State Dept of Finance statewide revenue projections

Estimated January 2026

	Highway Users Tax Acct (HUTA) <sup>(1)</sup> Streets & Highways Code					TOTAL HUTA	Road Mntnc Rehab Acct	TOTAL
	Sec2103 <sup>(3)</sup>	Sec2105 <sup>(3)</sup>	Sec2106 <sup>(3)</sup>	Sec2107 <sup>(3)</sup>	Sec2107.5 <sup>(4)</sup>			
<b>MONTEREY COUNTY</b>								
CARMEL-BY-THE-SEA	30,972	20,710	13,813	27,694	1,000	94,189	88,889	183,079
DEL REY OAKS	15,437	10,322	9,292	13,803	1,000	49,855	44,304	94,159
GONZALES	83,569	55,881	29,118	74,726	2,000	245,294	239,844	485,139
GREENFIELD	203,204	135,879	63,931	181,701	5,000	589,714	583,196	1,172,911
KING CITY	140,234	93,772	45,607	125,394	3,000	408,006	402,472	810,478
MARINA	225,699	150,921	70,477	201,816	5,000	653,914	647,759	1,301,673
MONTEREY	278,375	186,144	85,806	248,917	6,000	805,242	798,938	1,604,181
PACIFIC GROVE	146,432	97,916	47,411	130,936	3,000	425,695	420,261	845,956
SALINAS	1,581,597	1,057,585	465,036	1,414,232	10,000	4,528,451	4,539,196	9,067,647
SAND CITY	3,647	2,438	5,861	3,261	1,000	16,207	10,466	26,673
SEASIDE	319,993	213,974	97,916	286,132	6,000	924,015	918,384	1,842,399
SOLEDAD	269,342	180,104	83,177	240,840	6,000	779,462	773,012	1,552,474
<b>NAPA COUNTY</b>								
AMERICAN CANYON	218,954	146,410	72,274	195,784	5,000	638,422	628,399	1,266,821
CALISTOGA	51,199	34,236	20,578	45,781	2,000	153,795	146,943	300,737
NAPA	761,782	509,390	239,555	681,170	7,500	2,199,397	2,186,320	4,385,717
SAINT HELENA	52,754	35,275	21,057	47,171	2,000	158,258	151,404	309,661
YOUNTVILLE	29,183	19,514	13,793	26,095	1,000	89,584	83,755	173,339
<b>NEVADA COUNTY</b>								
GRASS VALLEY	133,058	88,973	120,708	118,977	3,000	464,716	381,877	846,593
NEVADA CITY	32,732	21,887	33,313	34,868	1,000	123,799	93,940	217,739
TRUCKEE	165,496	110,664	148,965	2,081,783	4,000	2,510,908	474,975	2,985,883

## ATTACHMENT B

## Local Streets and Roads - Projected FY2026-27 Revenues

Based on State Dept of Finance statewide revenue projections

Estimated January 2026

	Highway Users Tax Acct (HUTA) <sup>(1)</sup> Streets & Highways Code					TOTAL HUTA	Road Mntnc Rehab Acct	TOTAL
	Sec2103 <sup>(3)</sup>	Sec2105 <sup>(3)</sup>	Sec2106 <sup>(3)</sup>	Sec2107 <sup>(3)</sup>	Sec2107.5 <sup>(4)</sup>			
<b>ORANGE COUNTY</b>								
ALISO VIEJO	506,362	338,595	220,850	452,779	7,500	1,526,086	1,453,263	2,979,349
ANAHEIM	3,386,166	2,264,267	1,449,576	3,027,842	10,000	10,137,850	9,718,323	19,856,173
BREA	468,293	313,139	204,606	418,738	6,000	1,410,775	1,344,003	2,754,779
BUENA PARK	823,286	550,516	356,071	736,166	7,500	2,473,539	2,362,837	4,836,375
COSTA MESA	1,099,842	735,444	474,070	983,457	10,000	3,302,813	3,156,556	6,459,370
CYPRESS	492,294	329,188	214,847	440,199	7,500	1,484,028	1,412,887	2,896,915
DANA POINT	323,982	216,641	143,034	289,698	6,000	979,355	929,832	1,909,187
FOUNTAIN VALLEY	558,490	373,452	243,091	499,391	7,500	1,681,924	1,602,871	3,284,796
FULLERTON	1,406,598	940,567	604,954	1,257,752	10,000	4,219,870	4,036,949	8,256,819
GARDEN GROVE	1,681,033	1,124,076	722,047	1,503,146	10,000	5,040,303	4,824,579	9,864,882
HUNTINGTON BEACH	1,938,917	1,296,518	832,078	1,733,741	10,000	5,811,254	5,564,707	11,375,961
IRVINE	3,115,064	2,082,987	1,333,905	2,785,428	10,000	9,327,384	8,940,260	18,267,644
LAGUNA BEACH	224,741	150,280	100,690	200,959	5,000	681,671	645,009	1,326,681
LAGUNA HILLS	306,678	205,070	135,650	274,225	6,000	927,623	880,168	1,807,791
LAGUNA NIGUEL	637,983	426,607	277,008	570,471	7,500	1,919,569	1,831,015	3,750,585
LAGUNA WOODS	173,474	115,999	78,816	155,117	4,000	527,405	497,870	1,025,275
LA HABRA	613,346	410,133	266,496	548,442	7,500	1,845,917	1,760,308	3,606,225
LAKE FOREST	856,799	572,926	370,371	766,133	7,500	2,573,729	2,459,021	5,032,750
LA PALMA	152,249	101,806	69,760	136,138	4,000	463,953	436,955	900,908
LOS ALAMITOS	117,376	78,487	54,881	104,955	3,000	358,700	336,871	695,571
MISSION VIEJO	915,077	611,895	395,236	818,243	7,500	2,747,951	2,626,278	5,374,230
NEWPORT BEACH	831,938	556,302	359,763	743,902	7,500	2,499,405	2,387,668	4,887,073
ORANGE	1,375,480	919,758	591,676	1,229,927	10,000	4,126,841	3,947,638	8,074,479
PLACENTIA	527,753	352,899	229,976	471,906	7,500	1,590,034	1,514,655	3,104,690
RANCHO SANTA MARGARITA	468,439	313,237	204,669	418,869	6,000	1,411,214	1,344,424	2,755,638
SAN CLEMENTE	626,701	419,063	272,194	560,383	7,500	1,885,841	1,798,636	3,684,477
SAN JUAN CAPISTRANO	345,393	230,958	152,169	308,843	6,000	1,043,362	991,280	2,034,642
SANTA ANA	3,082,763	2,061,387	1,320,123	2,756,545	10,000	9,230,818	8,847,555	18,078,373
SEAL BEACH	247,325	165,382	110,326	221,153	6,000	750,186	709,825	1,460,010
STANTON	396,455	265,102	173,956	354,502	6,000	1,196,015	1,137,829	2,333,845
TUSTIN	785,461	525,223	339,933	702,343	7,500	2,360,459	2,254,278	4,614,737
VILLA PARK	57,280	38,302	29,240	51,219	2,000	178,041	164,395	342,436
WESTMINSTER	889,013	594,467	384,115	794,937	7,500	2,670,032	2,551,474	5,221,506
YORBA LINDA	665,259	444,846	288,646	594,861	7,500	2,001,113	1,909,299	3,910,411

## ATTACHMENT B

# Local Streets and Roads - Projected FY2026-27 Revenues

Based on State Dept of Finance statewide revenue projections

Estimated January 2026

	Highway Users Tax Acct (HUTA) <sup>(1)</sup> Streets & Highways Code					TOTAL HUTA	Road Mntnc Rehab Acct	TOTAL
	Sec2103 <sup>(3)</sup>	Sec2105 <sup>(3)</sup>	Sec2106 <sup>(3)</sup>	Sec2107 <sup>(3)</sup>	Sec2107.5 <sup>(4)</sup>			
<b>PLACER COUNTY</b>								
AUBURN	134,593	90,000	60,934	120,350	3,000	408,876	386,282	795,158
COLFAX	19,543	13,068	12,951	18,814	1,000	65,377	56,089	121,466
LINCOLN	533,013	356,416	227,100	476,609	7,500	1,600,638	1,529,751	3,130,389
LOOMIS	66,548	44,500	32,555	59,506	2,000	205,109	190,994	396,104
ROCKLIN	715,363	478,350	303,152	639,664	7,500	2,144,029	2,053,098	4,197,128
ROSEVILLE	1,549,511	1,036,129	651,045	1,385,541	10,000	4,632,226	4,447,108	9,079,334
<b>PLUMAS COUNTY</b>								
PORTOLA	20,638	13,800	9,566	170,053	1,000	215,058	59,232	274,289
<b>RIVERSIDE COUNTY</b>								
BANNING	312,348	208,862	135,665	279,295	6,000	942,170	896,442	1,838,612
BEAUMONT	583,733	390,332	249,367	521,962	7,500	1,752,894	1,675,318	3,428,212
BLYTHE	183,582	122,758	81,716	164,156	4,000	556,212	526,883	1,083,095
CALIMESA	107,482	71,872	49,832	96,109	3,000	328,295	308,475	636,770
CANYON LAKE	108,128	72,303	50,102	96,686	3,000	330,219	310,327	640,546
CATHEDRAL CITY	504,964	337,660	216,365	451,529	7,500	1,518,018	1,449,251	2,967,269
COACHELLA	433,918	290,153	186,599	388,001	6,000	1,304,672	1,245,350	2,550,022
CORONA	1,555,992	1,040,464	656,715	1,391,337	10,000	4,654,508	4,465,711	9,120,219
DESERT HOT SPRINGS	325,185	217,445	141,043	290,774	6,000	980,446	933,283	1,913,729
EASTVALE	682,387	456,300	290,700	610,177	7,500	2,047,064	1,958,457	4,005,521
HEMET	898,789	601,004	381,366	803,679	7,500	2,692,339	2,579,533	5,271,871
INDIAN WELLS	47,533	31,785	24,715	42,503	1,000	147,536	136,421	283,956
INDIO	904,704	604,959	383,844	808,968	7,500	2,709,975	2,596,508	5,306,483
JURUPA VALLEY	1,035,601	692,488	438,686	926,014	10,000	3,102,788	2,972,184	6,074,972
LAKE ELSINORE	721,337	482,345	307,019	645,005	7,500	2,163,205	2,070,242	4,233,447
LA QUINTA	379,288	253,623	163,710	339,151	6,000	1,141,772	1,088,559	2,230,331
MENIFEE	1,127,382	753,860	477,140	1,008,083	10,000	3,376,465	3,235,597	6,612,062
MORENO VALLEY	2,061,103	1,378,222	868,341	1,842,997	10,000	6,160,663	5,915,383	12,076,046
MURRIETA	1,092,901	730,803	462,693	977,250	10,000	3,273,647	3,136,635	6,410,282
NORCO	260,328	174,076	113,870	232,780	6,000	787,053	747,142	1,534,196
PALM DESERT	508,180	339,811	217,713	454,405	7,500	1,527,609	1,458,482	2,986,091
PALM SPRINGS	434,818	290,755	186,976	388,805	6,000	1,307,354	1,247,931	2,555,285
PERRIS	794,240	531,094	337,563	710,193	7,500	2,380,590	2,279,475	4,660,064
RANCHO MIRAGE	167,373	111,919	74,924	149,662	4,000	507,878	480,362	988,240
RIVERSIDE	3,131,762	2,094,152	1,316,915	2,800,359	10,000	9,353,190	8,988,184	18,341,374
SAN JACINTO	537,608	359,488	230,042	480,718	7,500	1,615,356	1,542,938	3,158,294
TEMECULA	1,097,115	733,620	464,458	981,018	10,000	3,286,211	3,148,728	6,434,939
WILDOMAR	362,482	242,385	156,669	324,124	6,000	1,091,660	1,040,326	2,131,986

## ATTACHMENT B

# Local Streets and Roads - Projected FY2026-27 Revenues

Based on State Dept of Finance statewide revenue projections

Estimated January 2026

	Highway Users Tax Acct (HUTA) <sup>(1)</sup> Streets & Highways Code					TOTAL HUTA	Road Mntnc Rehab Acct	TOTAL
	Sec2103 <sup>(3)</sup>	Sec2105 <sup>(3)</sup>	Sec2106 <sup>(3)</sup>	Sec2107 <sup>(3)</sup>	Sec2107.5 <sup>(4)</sup>			
<b>SACRAMENTO COUNTY</b>								
CITRUS HEIGHTS	857,601	573,462	378,973	766,850	7,500	2,584,386	2,461,322	5,045,708
ELK GROVE	1,787,548	1,195,301	784,711	1,598,390	10,000	5,375,950	5,130,277	10,506,227
FOLSOM	905,076	605,207	399,687	809,300	7,500	2,726,770	2,597,574	5,324,344
GALT	255,087	170,572	116,095	228,094	6,000	775,849	732,103	1,507,952
ISLETON	7,772	5,197	8,191	6,950	1,000	29,110	22,307	51,417
RANCHO CORDOVA	835,408	558,622	369,291	747,006	7,500	2,517,827	2,397,629	4,915,456
SACRAMENTO	5,161,767	3,451,579	2,256,891	4,615,548	20,000	15,505,786	14,814,313	30,320,098
<b>SAN BENITO COUNTY</b>								
HOLLISTER	425,198	284,322	180,669	380,203	6,000	1,276,393	1,220,321	2,496,714
SAN JUAN BAUTISTA	20,374	13,624	13,227	18,218	1,000	66,443	58,474	124,917
<b>SAN BERNARDINO COUNTY</b>								
ADELANTO	363,196	242,862	151,955	324,762	6,000	1,088,775	1,042,374	2,131,149
APPLE VALLEY	742,200	496,295	305,514	663,660	7,500	2,215,169	2,130,119	4,345,288
BARSTOW	249,632	166,924	105,942	223,216	6,000	751,715	716,446	1,468,162
BIG BEAR LAKE	49,283	32,955	24,768	630,057	2,000	739,063	141,443	880,506
CHINO	930,778	622,394	381,920	832,283	7,500	2,774,874	2,671,340	5,446,215
CHINO HILLS	766,260	512,384	315,262	685,174	7,500	2,286,580	2,199,171	4,485,751
COLTON	525,553	351,428	217,736	469,939	7,500	1,572,157	1,508,342	3,080,499
FONTANA	2,142,727	1,432,802	872,960	1,915,983	10,000	6,374,472	6,149,643	12,524,116
GRAND TERRACE	128,326	85,809	56,793	114,746	3,000	388,675	368,296	756,971
HESPERIA	995,166	665,449	408,007	889,857	10,000	2,968,479	2,856,134	5,824,613
HIGHLAND	558,119	373,204	230,931	499,059	7,500	1,668,812	1,601,805	3,270,617
LOMA LINDA	247,560	165,539	105,103	221,363	6,000	745,564	710,498	1,456,062
MONTCLAIR	371,672	248,530	155,389	332,341	6,000	1,113,932	1,066,701	2,180,633
NEEDLES	48,139	32,190	24,304	43,045	1,000	148,679	138,160	286,839
ONTARIO	1,802,819	1,205,512	735,241	1,612,044	10,000	5,365,616	5,174,105	10,539,720
RANCHO CUCAMONGA	1,720,579	1,150,520	701,920	1,538,507	10,000	5,121,527	4,938,076	10,059,603
REDLANDS	718,453	480,416	295,893	642,426	7,500	2,144,687	2,061,965	4,206,652
RIALTO	1,032,052	690,114	422,953	922,840	10,000	3,077,960	2,961,998	6,039,958
SAN BERNARDINO	2,181,324	1,458,612	888,598	1,950,496	10,000	6,489,031	6,260,418	12,749,449
TWENTYNINE PALMS	276,449	184,856	116,808	247,195	6,000	831,308	793,411	1,624,719
UPLAND	773,709	517,365	318,281	691,835	7,500	2,308,690	2,220,552	4,529,242
VICTORVILLE	1,378,608	921,850	563,365	1,232,724	10,000	4,106,548	3,956,617	8,063,165
YUCAIPA	536,122	358,495	222,018	479,389	7,500	1,603,524	1,538,673	3,142,197
YUCCA VALLEY	215,346	143,998	92,051	192,558	5,000	648,953	618,045	1,266,998

## ATTACHMENT B

# Local Streets and Roads - Projected FY2026-27 Revenues

Based on State Dept of Finance statewide revenue projections

Estimated January 2026

	Highway Users Tax Acct (HUTA) <sup>(1)</sup> Streets & Highways Code					TOTAL HUTA	Road Mntnc Rehab Acct	TOTAL
	Sec2103 <sup>(3)</sup>	Sec2105 <sup>(3)</sup>	Sec2106 <sup>(3)</sup>	Sec2107 <sup>(3)</sup>	Sec2107.5 <sup>(4)</sup>			
<b>SAN DIEGO COUNTY</b>								
CARLSBAD	1,137,667	760,737	493,455	1,017,279	10,000	3,419,140	3,265,115	6,684,254
CHULA VISTA	2,751,106	1,839,614	1,186,466	2,459,984	10,000	8,247,171	7,895,697	16,142,868
CORONADO	229,786	153,654	103,499	205,470	5,000	697,408	659,488	1,356,896
DEL MAR	38,627	25,829	21,391	34,539	1,000	121,386	110,859	232,246
EL CAJON	1,039,443	695,057	451,266	929,449	10,000	3,125,215	2,983,211	6,108,426
ENCINITAS	605,710	405,028	264,967	541,614	7,500	1,824,819	1,738,394	3,563,213
ESCONDIDO	1,479,071	989,028	640,097	1,322,556	10,000	4,440,752	4,244,946	8,685,698
IMPERIAL BEACH	259,829	173,743	116,403	232,334	6,000	788,309	745,711	1,534,020
LA MESA	595,465	398,176	260,566	532,453	7,500	1,794,160	1,708,989	3,503,149
LEMON GROVE	275,334	184,111	123,063	246,199	6,000	834,707	790,212	1,624,919
NATIONAL CITY	576,469	385,474	252,407	515,467	7,500	1,737,318	1,654,471	3,391,789
OCEANSIDE	1,704,428	1,139,720	736,893	1,524,066	10,000	5,115,107	4,891,724	10,006,831
POWAY	492,528	329,345	216,353	440,409	7,500	1,486,135	1,413,561	2,899,695
SAN DIEGO	13,774,419	9,210,703	5,921,244	12,316,810	20,000	41,243,176	39,532,696	80,775,872
SAN MARCOS	949,519	634,926	412,641	849,041	7,500	2,853,628	2,725,128	5,578,756
SANTEE	583,205	389,979	255,301	521,490	7,500	1,757,475	1,673,803	3,431,278
SOLANA BEACH	126,957	84,894	59,331	113,523	3,000	387,705	364,368	752,073
VISTA	993,279	664,187	431,437	888,170	7,500	2,984,573	2,850,718	5,835,291
<b>SAN FRANCISCO COUNTY</b>								
SAN FRANCISCO	8,544,286	5,713,408	2,160,956	7,640,129	20,000	24,078,779	24,522,170	48,600,949
<b>SAN JOAQUIN COUNTY</b>								
ESCALON	72,776	48,664	34,139	65,075	2,000	222,654	208,868	431,522
LATHROP	377,332	252,315	156,920	337,403	6,000	1,129,971	1,082,947	2,212,918
LODI	655,932	438,610	269,237	586,521	7,500	1,957,801	1,882,531	3,840,331
MANTECA	916,377	612,765	374,235	819,406	7,500	2,730,283	2,630,010	5,360,293
MOUNTAIN HOUSE	281,513	188,243	118,291	251,723	5,000	844,771	807,945	1,652,716
RIPON	156,306	104,519	67,814	139,766	4,000	472,405	448,600	921,005
STOCKTON	3,137,042	2,097,683	1,269,490	2,805,080	10,000	9,319,294	9,003,336	18,322,630
TRACY	960,195	642,065	391,900	858,587	7,500	2,860,248	2,755,768	5,616,016
<b>SAN LUIS OBISPO COUNTY</b>								
ARROYO GRANDE	179,369	119,941	93,657	160,388	4,000	557,355	514,790	1,072,144
ATASCADERO	301,115	201,350	153,969	269,251	6,000	931,685	864,203	1,795,888
EL PASO DE ROBLES	306,815	205,161	156,793	274,348	6,000	949,116	880,561	1,829,677
GROVER BEACH	125,031	83,606	66,739	111,800	3,000	390,177	358,840	749,017
MORRO BAY	103,210	69,015	55,929	92,288	3,000	323,442	296,214	619,656
PISMO BEACH	78,740	52,652	43,807	70,407	2,000	247,606	225,983	473,589
SAN LUIS OBISPO	484,267	323,821	244,701	433,022	6,000	1,491,811	1,389,851	2,881,662

## ATTACHMENT B

## Local Streets and Roads - Projected FY2026-27 Revenues

Based on State Dept of Finance statewide revenue projections

Estimated January 2026

	Highway Users Tax Acct (HUTA) <sup>(1)</sup> Streets & Highways Code					TOTAL HUTA	Road Mntnc Rehab Acct	TOTAL
	Sec2103 <sup>(3)</sup>	Sec2105 <sup>(3)</sup>	Sec2106 <sup>(3)</sup>	Sec2107 <sup>(3)</sup>	Sec2107.5 <sup>(4)</sup>			
<b>SAN MATEO COUNTY</b>								
ATHERTON	70,215	46,951	34,816	62,784	2,000	216,766	201,516	418,282
BELMONT	275,755	184,392	122,681	246,575	6,000	835,403	791,419	1,626,822
BRISBANE	47,426	31,713	25,074	42,407	1,000	147,619	136,112	283,731
BURLINGAME	308,467	206,266	136,665	275,825	6,000	933,223	885,303	1,818,526
COLMA	14,489	9,688	10,994	12,956	1,000	49,126	41,583	90,709
DALY CITY	1,024,925	685,349	442,940	916,468	10,000	3,079,682	2,941,544	6,021,225
EAST PALO ALTO	293,626	196,343	130,321	262,555	6,000	888,844	842,710	1,731,554
FOSTER CITY	329,330	220,217	145,584	294,480	6,000	995,611	945,180	1,940,790
HALF MOON BAY	114,883	76,820	53,911	102,726	3,000	351,341	329,716	681,056
HILLSBOROUGH	111,188	74,349	52,331	99,422	3,000	340,290	319,110	659,399
MENLO PARK	333,817	223,218	147,502	298,493	6,000	1,009,030	958,058	1,967,088
MILLBRAE	227,997	152,457	102,265	203,870	5,000	691,590	654,353	1,345,943
PACIFICA	378,105	252,832	166,434	338,094	6,000	1,141,464	1,085,164	2,226,628
PORTOLA VALLEY	43,378	29,006	23,344	38,788	1,000	135,516	124,496	260,011
REDWOOD CITY	815,885	545,567	353,579	729,548	7,500	2,452,079	2,341,596	4,793,675
SAN BRUNO	430,174	287,650	188,693	384,653	6,000	1,297,170	1,234,603	2,531,773
SAN CARLOS	300,509	200,945	133,263	268,709	6,000	909,426	862,463	1,771,889
SAN MATEO	1,033,538	691,108	446,622	924,169	10,000	3,105,438	2,966,263	6,071,701
SOUTH SAN FRANCISCO	647,769	433,151	281,712	579,222	7,500	1,949,353	1,859,102	3,808,455
WOODSIDE	51,884	34,694	26,980	46,393	2,000	161,950	148,907	310,857
<b>SANTA BARBARA COUNTY</b>								
BUELLTON	50,290	33,628	21,982	44,968	2,000	152,868	144,333	297,201
CARPINTERIA	128,472	85,907	48,693	114,878	3,000	380,950	368,717	749,667
GOLETA	320,150	214,078	114,179	286,272	6,000	940,679	918,833	1,859,511
GUADALUPE	86,531	57,862	34,363	77,375	2,000	258,132	248,346	506,478
LOMPOC	435,492	291,206	153,586	389,409	6,000	1,275,693	1,249,867	2,525,560
SANTA BARBARA	854,541	571,416	296,754	764,113	7,500	2,494,324	2,452,540	4,946,864
SANTA MARIA	1,096,997	733,542	379,589	980,913	10,000	3,201,041	3,148,391	6,349,433
SOLVANG	56,840	38,008	24,220	50,826	2,000	171,893	163,132	335,026

# Local Streets and Roads - Projected FY2026-27 Revenues

Based on State Dept of Finance statewide revenue projections

Estimated January 2026

	Highway Users Tax Acct (HUTA) <sup>(1)</sup> Streets & Highways Code					TOTAL HUTA	Road Mntnc Rehab Acct	TOTAL
	Sec2103 <sup>(3)</sup>	Sec2105 <sup>(3)</sup>	Sec2106 <sup>(3)</sup>	Sec2107 <sup>(3)</sup>	Sec2107.5 <sup>(4)</sup>			
<b>SANTA CLARA COUNTY</b>								
CAMPBELL	427,495	285,858	175,554	382,258	6,000	1,277,165	1,226,915	2,504,080
CUPERTINO	589,892	394,450	240,419	527,470	7,500	1,759,731	1,692,995	3,452,727
GILROY	608,145	406,655	247,710	543,791	7,500	1,813,801	1,745,381	3,559,182
LOS ALTOS	310,109	207,364	128,666	277,294	6,000	929,434	890,016	1,819,450
LOS ALTOS HILLS	83,569	55,881	38,180	74,726	2,000	254,356	239,844	494,200
LOS GATOS	326,974	218,641	135,402	292,373	6,000	979,391	938,417	1,917,808
MILPITAS	800,839	535,506	324,677	716,094	7,500	2,384,617	2,298,414	4,683,031
MONTE SERENO	35,557	23,776	19,002	31,794	1,000	111,130	102,049	213,179
MORGAN HILL	455,573	304,634	186,769	407,365	6,000	1,360,340	1,307,499	2,667,839
MOUNTAIN VIEW	845,791	565,565	342,632	756,289	7,500	2,517,778	2,427,427	4,945,205
PALO ALTO	672,562	449,730	273,440	601,391	7,500	2,004,623	1,930,258	3,934,881
SAN JOSE	9,898,198	6,618,745	3,958,416	8,850,771	20,000	29,346,130	28,407,911	57,754,041
SANTA CLARA	1,315,785	879,841	530,361	1,176,548	10,000	3,912,535	3,776,313	7,688,848
SARATOGA	304,146	203,377	126,284	271,961	6,000	911,768	872,901	1,784,668
SUNNYVALE	1,561,037	1,043,837	628,322	1,395,848	10,000	4,639,044	4,480,189	9,119,233
<b>SANTA CRUZ COUNTY</b>								
CAPITOLA	96,386	64,452	40,722	86,187	2,000	289,747	276,629	566,376
SANTA CRUZ	632,488	422,933	240,523	565,558	7,500	1,869,003	1,815,246	3,684,250
SCOTTS VALLEY	117,992	78,899	48,775	105,506	3,000	354,172	338,638	692,811
WATSONVILLE	506,509	338,693	193,572	452,910	7,500	1,499,184	1,453,684	2,952,868
<b>SHASTA COUNTY</b>								
ANDERSON	109,213	73,029	61,241	97,656	3,000	344,138	313,442	657,580
REDDING	916,504	612,850	478,445	819,520	7,500	2,834,818	2,630,375	5,465,193
SHASTA LAKE	101,108	67,609	57,052	90,409	3,000	319,178	290,181	609,360
<b>SIERRA COUNTY</b>								
LOYALTON	7,215	4,825	6,479	7,893	1,000	27,411	20,707	48,118
<b>SISKIYOU COUNTY</b>								
DORRIS	8,388	5,609	8,990	7,501	1,000	31,488	24,074	55,562
DUNSMUIR	16,649	11,133	13,116	51,409	1,000	93,308	47,784	141,091
ETNA	6,687	4,472	8,140	5,979	1,000	26,278	19,192	45,470
FORT JONES	6,785	4,537	8,189	6,067	1,000	26,578	19,473	46,050
MONTAGUE	12,015	8,034	10,801	10,744	1,000	42,595	34,484	77,079
MOUNT SHASTA	31,686	21,188	20,626	90,658	1,000	165,157	90,938	256,095
TULELAKE	8,799	5,884	9,195	7,868	1,000	32,745	25,253	57,998
WEED	28,537	19,083	19,054	66,673	1,000	134,347	81,903	216,249
YREKA	77,029	51,508	43,274	76,265	2,000	250,075	221,073	471,148

ATTACHMENT B

# Local Streets and Roads - Projected FY2026-27 Revenues

Based on State Dept of Finance statewide revenue projections

Estimated January 2026

	Highway Users Tax Acct (HUTA) <sup>(1)</sup> Streets & Highways Code					TOTAL HUTA	Road Mntnc Rehab Acct	TOTAL
	Sec2103 <sup>(3)</sup>	Sec2105 <sup>(3)</sup>	Sec2106 <sup>(3)</sup>	Sec2107 <sup>(3)</sup>	Sec2107.5 <sup>(4)</sup>			
<b>SOLANO COUNTY</b>								
BENICIA	264,766	177,044	115,756	236,749	6,000	800,315	759,881	1,560,196
DIXON	197,230	131,884	87,454	176,359	4,000	596,928	566,053	1,162,980
FAIRFIELD	1,180,214	789,188	499,394	1,055,324	10,000	3,534,121	3,387,225	6,921,346
RIO VISTA	101,069	67,583	47,155	90,374	3,000	309,181	290,069	599,250
SUISUN CITY	287,956	192,551	125,474	257,484	6,000	869,465	826,436	1,695,901
VACAVILLE	1,008,745	674,529	427,536	902,000	10,000	3,022,811	2,895,107	5,917,917
VALLEJO	1,231,209	823,287	520,764	1,100,922	10,000	3,686,182	3,533,579	7,219,760
<b>SONOMA COUNTY</b>								
CLOVERDALE	88,076	58,895	42,344	78,756	2,000	270,071	252,779	522,850
COTATI	74,115	49,560	36,393	66,272	2,000	228,340	212,712	441,052
HEALDSBURG	110,552	73,924	51,924	98,854	3,000	338,254	317,286	655,540
PETALUMA	584,906	391,116	254,124	523,011	7,500	1,760,657	1,678,686	3,439,343
ROHNERT PARK	430,868	288,114	188,463	385,274	6,000	1,298,719	1,236,595	2,535,314
SANTA ROSA	1,744,629	1,166,602	748,470	1,560,013	10,000	5,229,714	5,007,100	10,236,814
SEBASTOPOL	73,548	49,180	36,151	65,765	2,000	226,645	211,084	437,729
SONOMA	105,292	70,407	49,682	94,150	3,000	322,532	302,190	624,723
WINDSOR	256,310	171,389	114,055	229,187	6,000	776,941	735,610	1,512,551
<b>STANISLAUS COUNTY</b>								
CERES	491,072	328,371	196,504	439,106	7,500	1,462,553	1,409,380	2,871,933
HUGHSON	77,987	52,148	35,244	69,734	2,000	237,114	223,823	460,937
MODESTO	2,148,524	1,436,679	843,540	1,921,167	10,000	6,359,910	6,166,282	12,526,192
NEWMAN	121,121	80,991	52,083	108,304	3,000	365,498	347,617	713,115
OAKDALE	227,117	151,869	93,462	203,083	5,000	680,531	651,828	1,332,359
PATTERSON	252,898	169,108	103,526	226,136	6,000	757,667	725,818	1,483,485
RIVERBANK	255,068	170,559	104,373	228,077	6,000	764,077	732,047	1,496,124
TURLOCK	706,046	472,120	280,426	631,332	7,500	2,097,425	2,026,359	4,123,784
WATERFORD	89,640	59,941	39,794	80,155	2,000	271,530	257,269	528,798
<b>SUTTER COUNTY</b>								
LIVE OAK	94,421	63,138	40,210	84,429	2,000	284,198	270,989	555,187
YUBA CITY	688,781	460,575	263,108	615,894	7,500	2,035,859	1,976,807	4,012,666
<b>TEHAMA COUNTY</b>								
CORNING	80,832	54,051	35,124	72,278	2,000	244,285	231,988	476,273
RED BLUFF	144,770	96,805	59,111	129,450	3,000	433,136	415,491	848,627
TEHAMA	4,243	2,837	6,392	3,794	1,000	18,266	12,177	30,443
<b>TRINITY COUNTY</b>								

ATTACHMENT B

# Local Streets and Roads - Projected FY2026-27 Revenues

Based on State Dept of Finance statewide revenue projections

Estimated January 2026

	Highway Users Tax Acct (HUTA) <sup>(1)</sup> Streets & Highways Code					TOTAL HUTA	Road Mntnc Rehab Acct	TOTAL
	Sec2103 <sup>(3)</sup>	Sec2105 <sup>(3)</sup>	Sec2106 <sup>(3)</sup>	Sec2107 <sup>(3)</sup>	Sec2107.5 <sup>(4)</sup>			
<b>TULARE COUNTY</b>								
DINUBA	254,432	170,134	97,041	227,508	6,000	755,116	730,223	1,485,339
EXETER	101,186	67,661	41,484	90,479	3,000	303,810	290,406	594,216
FARMERSVILLE	101,597	67,936	41,632	90,846	3,000	305,011	291,584	596,596
LINDSAY	124,405	83,188	49,901	111,241	3,000	371,735	357,045	728,780
PORTERVILLE	621,998	415,919	230,296	556,178	7,500	1,831,891	1,785,140	3,617,031
TULARE	713,701	477,239	263,542	638,177	7,500	2,100,159	2,048,329	4,148,488
VISALIA	1,436,925	960,845	525,735	1,284,869	10,000	4,218,375	4,123,986	8,342,361
WOODLAKE	78,261	52,331	33,172	69,979	2,000	235,743	224,609	460,352
<b>TUOLUMNE COUNTY</b>								
SONORA	50,867	34,014	33,782	45,484	2,000	166,147	145,989	312,135
<b>VENTURA COUNTY</b>								
CAMARILLO	691,910	462,667	300,384	618,692	7,500	2,081,153	1,985,786	4,066,939
FILLMORE	166,542	111,364	75,947	148,919	4,000	506,771	477,977	984,748
MOORPARK	354,103	236,783	156,073	316,632	6,000	1,069,592	1,016,280	2,085,871
OJAI	75,161	50,259	36,909	67,208	2,000	231,537	215,714	447,251
OXNARD	1,971,903	1,318,575	847,199	1,763,236	10,000	5,910,912	5,659,377	11,570,289
PORT HUENEME	215,718	144,246	96,955	192,890	5,000	654,809	619,111	1,273,921
SAN BUENAVENTURA	1,076,193	719,631	464,551	962,310	10,000	3,232,684	3,088,683	6,321,367
SANTA PAULA	309,503	206,959	137,020	276,752	6,000	936,234	888,277	1,824,511
SIMI VALLEY	1,233,780	825,006	531,872	1,103,221	10,000	3,703,879	3,540,958	7,244,837
THOUSAND OAKS	1,239,910	829,105	534,490	1,108,702	10,000	3,722,207	3,558,551	7,280,758
<b>YOLO COUNTY</b>								
DAVIS	639,605	427,693	286,733	571,922	7,500	1,933,454	1,835,673	3,769,127
WEST SACRAMENTO	541,645	362,188	243,553	484,328	7,500	1,639,215	1,554,527	3,193,742
WINTERS	78,417	52,436	39,366	70,119	2,000	242,338	225,057	467,395
WOODLAND	602,455	402,851	270,357	538,703	7,500	1,821,866	1,729,051	3,550,917
<b>YUBA COUNTY</b>								
MARYSVILLE	128,668	86,038	46,017	115,052	3,000	378,776	369,278	748,054
WHEATLAND	39,223	26,228	17,365	35,073	1,000	118,888	112,571	231,459
Statewide Total	\$ 326,951,500	\$ 218,626,500	\$ 130,324,066	\$ 298,737,000	\$ 2,724,000	\$ 977,363,066	\$ 938,353,500	\$ 1,915,716,566

**Notes:**

1. The Highway Users Tax is also known as the "Motor Vehicle Fuel Tax", the "Gasoline Excise Tax" and "Article XIX Revenues."
2. Rolling Hills has no public streets and is therefore not eligible for HUTA or RMRA allocations.
3. Str&HwysCode §§ 2103, 2105, 2106, 2107 and RMRA amounts are paid monthly. Includes special payments for snow removal.
4. Str&HwysCode § 2107.5 amounts are typically paid by the State Controller once per year in July.

ATTACHMENT C

# Local Streets and Roads - Projected FY2025-26 Revenues

Based on State Dept of Finance statewide revenue projections  
 Estimated January 2026

	Highway Users Tax Acct <sup>(1)</sup>				TOTAL HUTA	Road Maintnc Rehab Acct	TOTAL Annual
	Sec2103 <sup>(2)</sup>	Sec2104	Sec2105	Sec2106			
ALAMEDA COUNTY	9,448,584	14,878,316	6,747,060	450,174	31,524,134	26,097,421	57,621,555
ALPINE COUNTY	182,626	289,606	136,703	20,966	629,901	504,422	1,134,323
AMADOR COUNTY	931,241	785,227	575,397	212,189	2,504,054	2,572,129	5,076,183
BUTTE COUNTY	3,066,522	2,657,676	1,894,748	443,457	8,062,403	8,469,874	16,532,277
CALAVERAS COUNTY	1,411,052	1,106,765	871,863	360,963	3,750,643	3,897,391	7,648,034
COLUSA COUNTY	1,085,759	613,553	670,871	124,423	2,494,606	2,998,917	5,493,523
CONTRA COSTA COUNTY	7,982,250	12,086,933	5,755,827	989,597	26,814,607	22,047,339	48,861,946
DEL NORTE COUNTY	555,537	350,702	343,256	118,863	1,368,358	1,534,419	2,902,777
EL DORADO COUNTY	2,976,706	3,873,217	2,103,531	905,747	9,859,201	8,221,799	18,081,000
FRESNO COUNTY	10,448,018	10,609,625	6,455,639	1,308,739	28,822,021	28,857,904	57,679,925
GLENN COUNTY	1,327,540	755,416	820,263	149,849	3,053,068	3,666,727	6,719,795
HUMBOLDT COUNTY	2,490,628	1,798,993	1,538,913	424,366	6,252,900	6,879,228	13,132,128
IMPERIAL COUNTY	4,706,234	2,612,878	2,907,895	466,106	10,693,113	12,998,832	23,691,945
INYO COUNTY	1,555,199	969,928	960,929	134,632	3,620,688	4,295,530	7,916,218
KERN COUNTY	9,581,174	9,406,668	5,920,032	2,102,164	27,010,038	26,463,640	53,473,678
KINGS COUNTY	2,020,545	1,525,189	1,248,458	257,062	5,051,254	5,580,838	10,632,092
LAKE COUNTY	1,382,532	1,072,538	854,241	353,189	3,662,500	3,818,617	7,481,117
LASSEN COUNTY	1,334,091	938,437	824,310	134,458	3,231,296	3,684,819	6,916,115
LOS ANGELES COUNTY	56,992,981	88,956,483	40,409,135	2,848,095	189,206,694	157,417,218	346,623,912
MADERA COUNTY	2,958,510	1,931,165	1,828,009	555,154	7,272,838	8,171,541	15,444,379
MARIN COUNTY	2,157,503	2,784,532	1,365,388	317,462	6,624,885	5,959,122	12,584,007
MARIPOSA COUNTY	885,452	540,863	547,104	141,540	2,114,959	2,445,658	4,560,617
MENDOCINO COUNTY	2,036,277	1,380,019	1,258,178	417,352	5,091,826	5,624,290	10,716,116
MERCED COUNTY	3,950,802	3,029,766	2,441,128	634,854	10,056,550	10,912,295	20,968,845
MODOC COUNTY	1,307,289	868,742	807,750	67,634	3,051,415	3,610,791	6,662,206
MONO COUNTY	958,656	778,477	592,336	32,304	2,361,773	2,647,851	5,009,624
MONTEREY COUNTY	4,387,465	4,789,425	2,710,934	965,265	12,853,089	12,118,379	24,971,468
NAPA COUNTY	1,505,119	1,695,203	929,985	333,534	4,463,841	4,157,207	8,621,048
NEVADA COUNTY	1,586,328	1,797,533	980,163	329,890	4,693,914	4,381,512	9,075,426
ORANGE COUNTY	20,576,812	33,776,695	15,234,287	833,730	70,421,524	56,834,095	127,255,619
PLACER COUNTY	4,509,566	6,594,634	3,310,850	927,209	15,342,259	12,455,628	27,797,887
PLUMAS COUNTY	1,070,832	1,049,568	661,647	161,798	2,943,845	2,957,686	5,901,531
RIVERSIDE COUNTY	18,146,510	25,836,626	12,190,427	1,858,522	58,032,085	50,121,491	108,153,576
SACRAMENTO COUNTY	12,533,964	16,435,418	8,268,455	2,349,495	39,587,332	34,619,382	74,206,714
SAN BENITO COUNTY	1,073,461	899,569	663,272	177,106	2,813,408	2,964,948	5,778,356
SAN BERNARDINO COUNTY	16,755,904	23,676,807	11,130,076	1,609,355	53,172,142	46,280,572	99,452,714
SAN DIEGO COUNTY	23,110,215	34,806,103	16,277,305	2,173,930	76,367,553	63,831,470	140,199,023
SAN FRANCISCO COUNTY	4,333,502	5,340,404	2,677,591	9,600	12,361,097	11,969,329	24,330,426
SAN JOAQUIN COUNTY	7,103,008	8,629,128	4,388,819	838,171	20,959,126	19,618,834	40,577,960
SAN LUIS OBISPO COUNTY	3,851,182	3,729,037	2,379,575	714,474	10,674,268	10,373,141	21,047,409
SAN MATEO COUNTY	5,160,624	8,009,984	3,661,437	308,351	17,140,396	14,253,879	31,394,275
SANTA BARBARA COUNTY	3,876,085	4,838,781	2,522,396	891,793	12,129,055	10,705,924	22,834,979
SANTA CLARA COUNTY	11,965,160	18,777,029	8,410,497	330,586	39,483,272	33,048,319	72,531,591
SANTA CRUZ COUNTY	2,481,310	3,013,353	1,627,663	684,496	7,806,822	6,853,490	14,660,312
SHASTA COUNTY	2,951,012	2,716,673	1,823,376	441,117	7,932,178	8,150,831	16,083,009
SIERRA COUNTY	524,603	434,640	324,142	36,586	1,319,971	1,448,977	2,768,948
SISKIYOU COUNTY	2,113,904	1,558,599	1,306,143	215,979	5,194,625	5,838,701	11,033,326
SOLANO COUNTY	3,642,067	4,933,095	2,263,753	209,873	11,048,788	10,059,557	21,108,345
SONOMA COUNTY	5,363,857	6,238,090	3,314,229	1,020,063	15,936,239	14,815,219	30,751,458
STANISLAUS COUNTY	5,517,383	6,164,357	3,409,090	785,859	15,876,689	15,239,264	31,115,953
SUTTER COUNTY	1,683,330	1,290,272	1,040,099	227,215	4,240,916	4,649,433	8,890,349
TEHAMA COUNTY	1,859,553	1,024,824	1,148,983	277,039	4,310,399	5,136,169	9,446,568
TRINITY COUNTY	980,307	696,843	605,714	96,510	2,379,374	2,707,654	5,087,028
TULARE COUNTY	6,669,753	5,194,002	4,121,118	813,866	16,798,739	18,422,164	35,220,903
TUOLUMNE COUNTY	1,305,415	1,129,133	806,592	353,320	3,594,460	3,605,615	7,200,075
VENTURA COUNTY	6,277,691	9,476,499	4,468,208	674,719	20,897,117	17,339,270	38,236,387
YOLO COUNTY	2,409,460	2,510,113	1,488,761	195,892	6,604,226	6,655,039	13,259,265
YUBA COUNTY	1,386,910	1,010,847	856,946	334,731	3,589,434	3,830,709	7,420,143
<b>Total</b>	\$ 320,446,000	\$ 414,674,998	\$ 214,881,497	\$ 35,151,413	\$ 985,153,908	\$ 885,086,500	\$ 1,870,240,408

**Notes:**

1. The Highway Users Tax is also known as the "Motor Vehicle Fuel Tax", the "Gasoline Excise Tax" and "Article XIX Revenues."

ATTACHMENT D

## Local Streets and Roads - Projected FY2026-27 Revenues

Based on State Dept of Finance statewide revenue projections

Estimated January 2026

	Highway Users Tax Acct <sup>(1)</sup>				TOTAL HUTA	Road Maintnc Rehab Acct	TOTAL Annual
	Sec2103 <sup>(2)</sup>	Sec2104	Sec2105	Sec2106			
ALAMEDA COUNTY	9,640,403	15,147,286	6,865,780	457,733	32,111,203	27,668,037	59,779,240
ALPINE COUNTY	186,334	289,739	136,790	21,168	634,030	534,780	1,168,810
AMADOR COUNTY	950,146	798,229	585,163	214,800	2,548,338	2,726,927	5,275,265
BUTTE COUNTY	3,128,777	2,703,902	1,926,907	445,851	8,205,436	8,979,615	17,185,050
CALAVERAS COUNTY	1,439,699	1,123,899	886,661	367,453	3,817,712	4,131,947	7,949,659
COLUSA COUNTY	1,107,802	615,257	682,257	126,559	2,531,875	3,179,400	5,711,275
CONTRA COSTA COUNTY	8,144,301	12,304,608	5,865,824	1,027,641	27,342,374	23,374,210	50,716,583
DEL NORTE COUNTY	566,815	356,611	349,082	121,241	1,393,749	1,626,765	3,020,514
EL DORADO COUNTY	3,037,138	3,923,074	2,131,770	922,159	10,014,141	8,716,610	18,730,751
FRESNO COUNTY	10,660,128	10,797,538	6,565,208	1,323,275	29,346,149	30,594,654	59,940,803
GLENN COUNTY	1,354,491	757,550	834,185	148,913	3,095,140	3,887,401	6,982,540
HUMBOLDT COUNTY	2,541,191	1,829,827	1,565,033	430,160	6,366,211	7,293,239	13,659,450
IMPERIAL COUNTY	4,801,777	2,659,856	2,957,250	476,032	10,894,915	13,781,139	24,676,053
INYO COUNTY	1,586,771	971,569	977,238	136,786	3,672,365	4,554,047	8,226,412
KERN COUNTY	9,775,685	9,573,968	6,020,510	2,083,897	27,454,060	28,056,296	55,510,356
KINGS COUNTY	2,061,565	1,552,461	1,269,648	266,241	5,149,914	5,916,709	11,066,623
LAKE COUNTY	1,410,600	1,091,570	868,740	359,989	3,730,899	4,048,433	7,779,331
LASSEN COUNTY	1,361,175	940,424	838,301	137,041	3,276,941	3,906,582	7,183,523
LOS ANGELES COUNTY	58,150,017	90,563,051	41,127,851	2,915,164	192,756,084	166,891,029	359,647,114
MADERA COUNTY	3,018,572	1,965,299	1,859,035	562,074	7,404,980	8,663,327	16,068,307
MARIN COUNTY	2,201,303	2,834,278	1,389,576	324,046	6,379,204	6,317,758	13,066,962
MARIPOSA COUNTY	903,428	542,401	556,390	143,881	2,146,100	2,592,845	4,738,945
MENDOCINO COUNTY	2,077,616	1,403,930	1,279,533	425,236	5,186,315	5,962,776	11,149,090
MERCED COUNTY	4,031,008	3,084,298	2,482,560	643,540	10,241,406	11,569,027	21,810,433
MODOC COUNTY	1,333,828	869,530	821,459	68,664	3,093,482	3,828,099	6,921,581
MONO COUNTY	978,118	779,449	602,389	32,680	2,392,636	2,807,206	5,199,843
MONTEREY COUNTY	4,476,537	4,875,504	2,756,946	976,960	13,085,946	12,847,698	25,933,644
NAPA COUNTY	1,535,675	1,725,378	945,770	341,931	4,548,754	4,407,399	8,956,153
NEVADA COUNTY	1,618,533	1,824,830	996,799	332,173	4,772,335	4,645,203	9,417,539
ORANGE COUNTY	20,994,550	34,388,306	15,508,838	861,251	71,752,945	60,254,531	132,007,476
PLACER COUNTY	4,601,116	6,692,561	3,359,497	943,136	15,596,311	13,205,242	28,801,553
PLUMAS COUNTY	1,092,571	1,051,396	672,877	164,368	2,981,212	3,135,688	6,116,900
RIVERSIDE COUNTY	18,514,910	26,302,445	12,412,009	1,908,423	59,137,787	53,137,944	112,275,731
SACRAMENTO COUNTY	12,788,421	16,732,838	8,412,759	2,388,261	40,322,278	36,702,874	77,025,152
SAN BENITO COUNTY	1,095,254	915,408	674,529	179,928	2,865,120	3,143,387	6,008,507
SAN BERNARDINO COUNTY	17,096,072	24,089,166	11,321,600	1,643,347	54,150,186	49,065,867	103,216,052
SAN DIEGO COUNTY	23,579,384	35,434,281	16,563,958	2,213,425	77,791,049	67,673,027	145,464,076
SAN FRANCISCO COUNTY	4,421,478	5,436,709	2,723,037	9,600	12,590,824	12,689,677	25,280,501
SAN JOAQUIN COUNTY	7,247,209	8,785,111	4,463,309	858,257	21,353,886	20,799,551	42,153,437
SAN LUIS OBISPO COUNTY	3,929,366	3,795,696	2,419,963	720,016	10,865,041	11,277,314	22,142,355
SAN MATEO COUNTY	5,265,392	8,154,750	3,729,107	321,021	17,470,269	15,111,717	32,581,986
SANTA BARBARA COUNTY	3,954,775	4,925,395	2,569,099	913,829	12,363,098	11,350,236	23,713,334
SANTA CLARA COUNTY	12,208,069	19,116,856	8,557,897	334,123	40,216,946	35,037,260	75,254,206
SANTA CRUZ COUNTY	2,531,684	3,066,486	1,654,858	694,790	7,947,817	7,265,953	15,213,770
SHASTA COUNTY	3,010,922	2,762,289	1,854,324	448,549	8,076,084	8,641,371	16,717,454
SIERRA COUNTY	535,253	434,974	329,644	37,100	1,336,971	1,536,181	2,873,152
SISKIYOU COUNTY	2,156,820	1,562,123	1,328,312	219,057	5,266,311	6,190,090	11,456,401
SOLANO COUNTY	3,716,007	5,022,112	2,303,155	212,658	11,253,932	10,664,969	21,918,901
SONOMA COUNTY	5,472,751	6,349,824	3,370,480	1,032,791	16,225,847	15,706,841	31,932,688
STANISLAUS COUNTY	5,629,394	6,275,683	3,466,951	796,300	16,168,328	16,156,406	32,324,734
SUTTER COUNTY	1,717,504	1,313,287	1,057,752	231,165	4,319,708	4,929,249	9,248,957
TEHAMA COUNTY	1,897,304	1,028,923	1,168,485	281,201	4,375,913	5,445,278	9,821,191
TRINITY COUNTY	1,000,209	697,857	615,995	98,051	2,412,112	2,870,608	5,282,720
TULARE COUNTY	6,805,159	5,286,131	4,191,065	827,866	17,110,221	19,530,862	36,641,083
TUOLUMNE COUNTY	1,331,916	1,146,072	820,282	359,861	3,658,131	3,822,611	7,480,742
VENTURA COUNTY	6,405,137	9,646,708	4,546,540	686,982	21,285,366	18,382,796	39,668,163
YOLO COUNTY	2,458,376	2,555,230	1,514,030	198,902	6,726,537	7,055,558	13,782,095
YUBA COUNTY	1,415,066	1,028,069	871,491	341,385	3,656,011	4,061,252	7,717,263
<b>Total</b>	\$ 326,951,500	\$ 421,902,000	\$ 218,626,500	\$ 35,758,934	\$ 1,003,238,934	\$ 938,353,500	\$ 1,941,592,434

**Notes:**

1. The Highway Users Tax is also known as the "Motor Vehicle Fuel Tax", the "Gasoline Excise Tax" and "Article XIX Revenues."